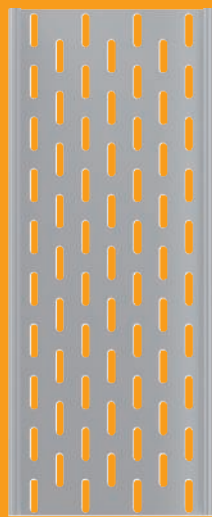
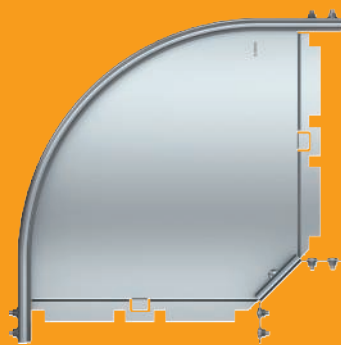




Cable support system

MKS | SKS



Building Connections

OBO
BETTERMANN



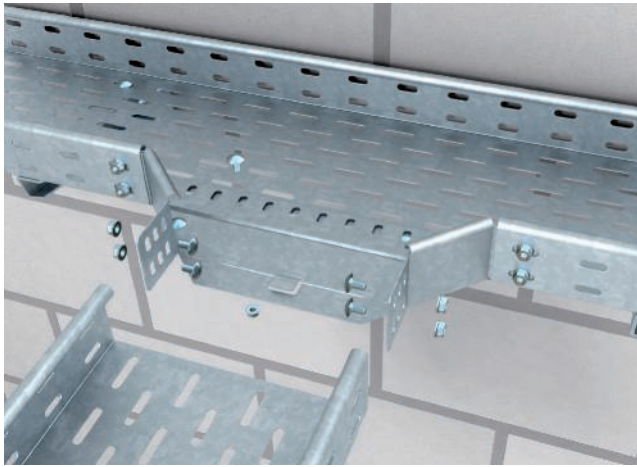
Robust, tested, practical: 45 years of MKS and SKS cable tray systems

The MKS and SKS cable tray systems from OBO Bettermann have a long tradition. For 45 years, the robust systems, which have been tested for various areas of application, have been successfully employed by planners and specialists in the field of electrical installations.

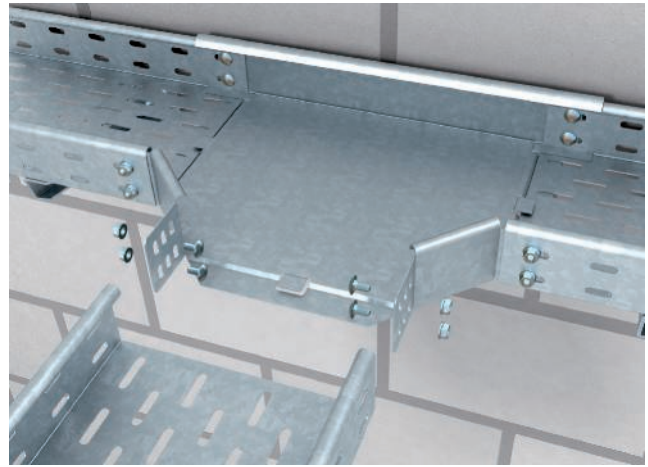
The systems have proved their worth in indoor and outdoor areas, both in industrial environments and in public buildings, on ships just as much as in tunnels, or in the construction of power stations and mines. The fire protection-tested routing systems according to DIN 4102 are also used for fireproof installations in escape and rescue routes.

The different versions of the medium-duty and heavy-duty cable trays are intrinsically closed systems, comprising all the necessary fittings and accessories. Using cable trays in the recognised OBO quality means that all the requirements for electrical installations on the construction site can be mastered professionally and safely.

Maximum load capacity and versatility



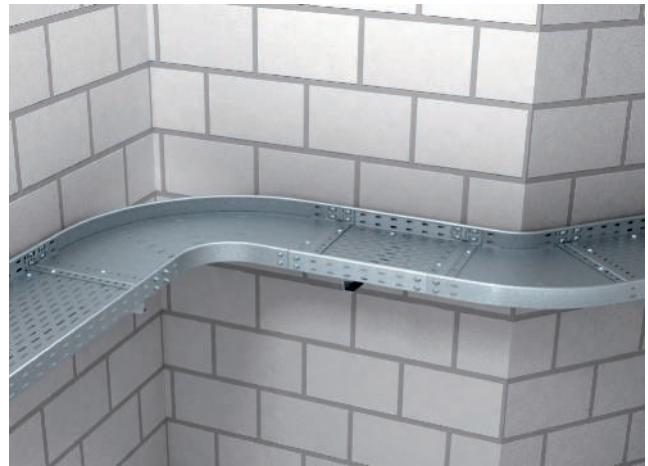
Add-on tee, type RAA
Installed horizontally



Tee



Add-on tee, type RAA
Installed vertically



90° bend and 45° bend
Type RB 90 and type RB 45

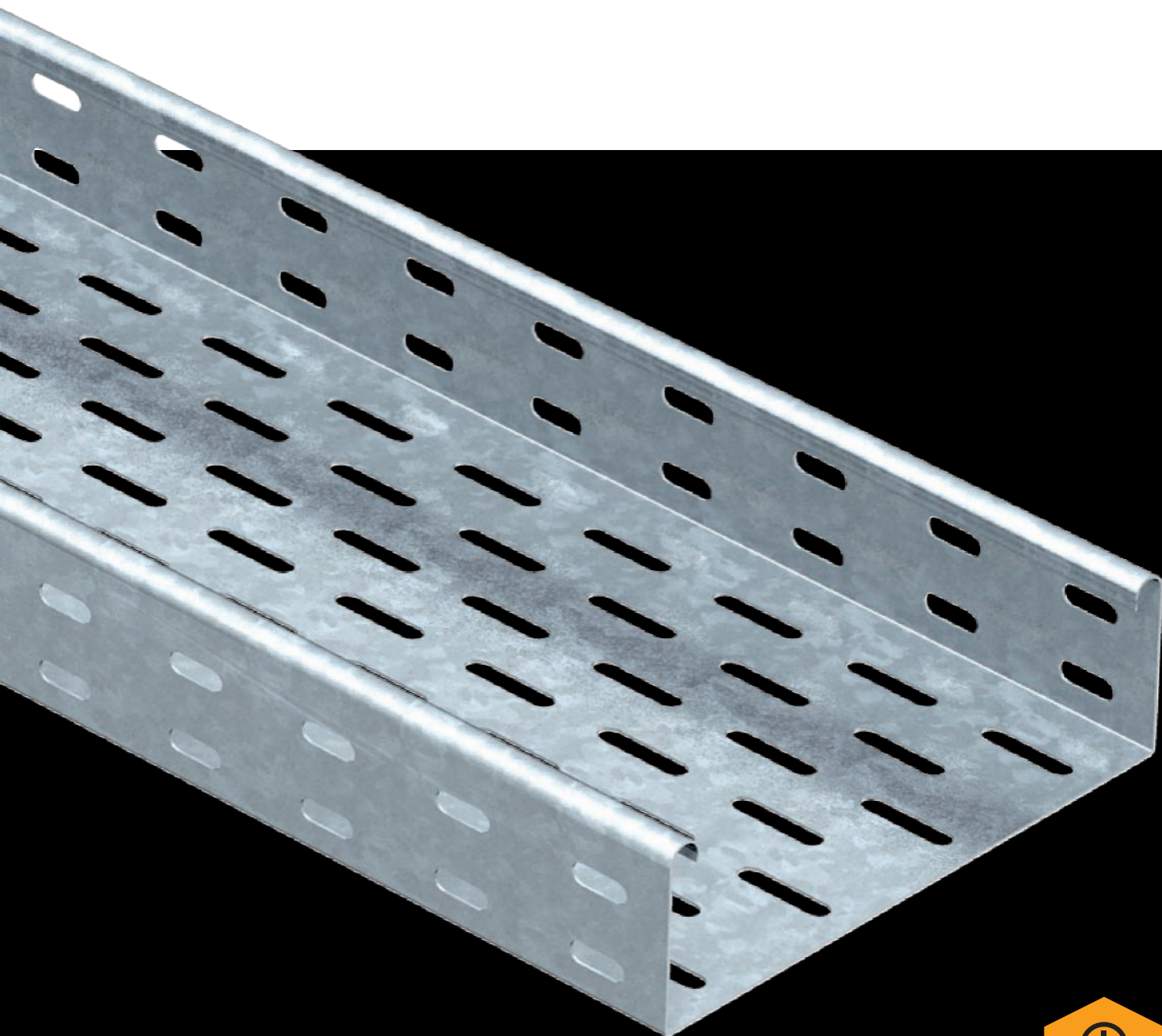


Adjustable bend element type RGBEV



Floor end plate, type BEB, and adjustable connector, type RGV

Cable tray systems MKS and SKS

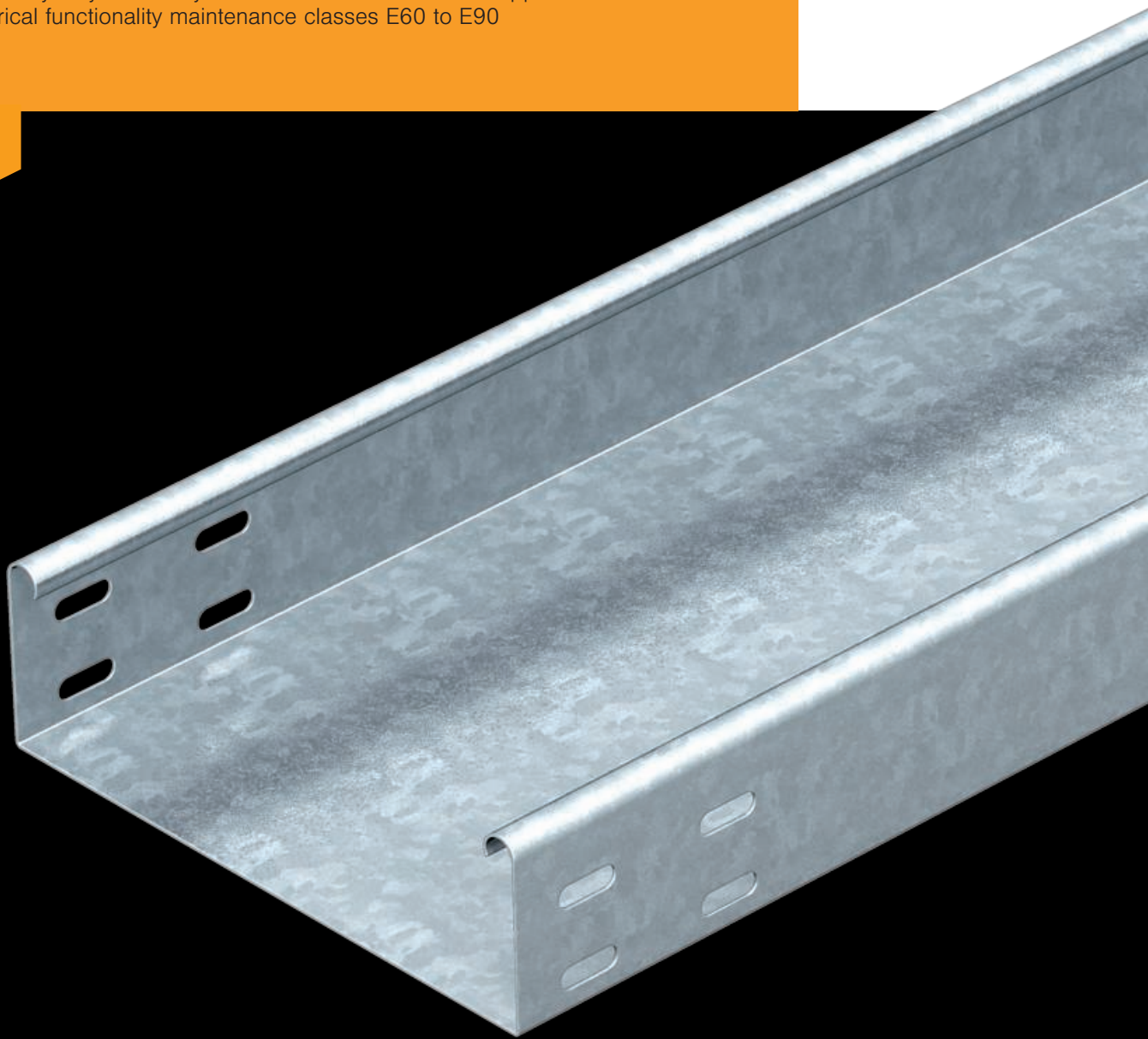


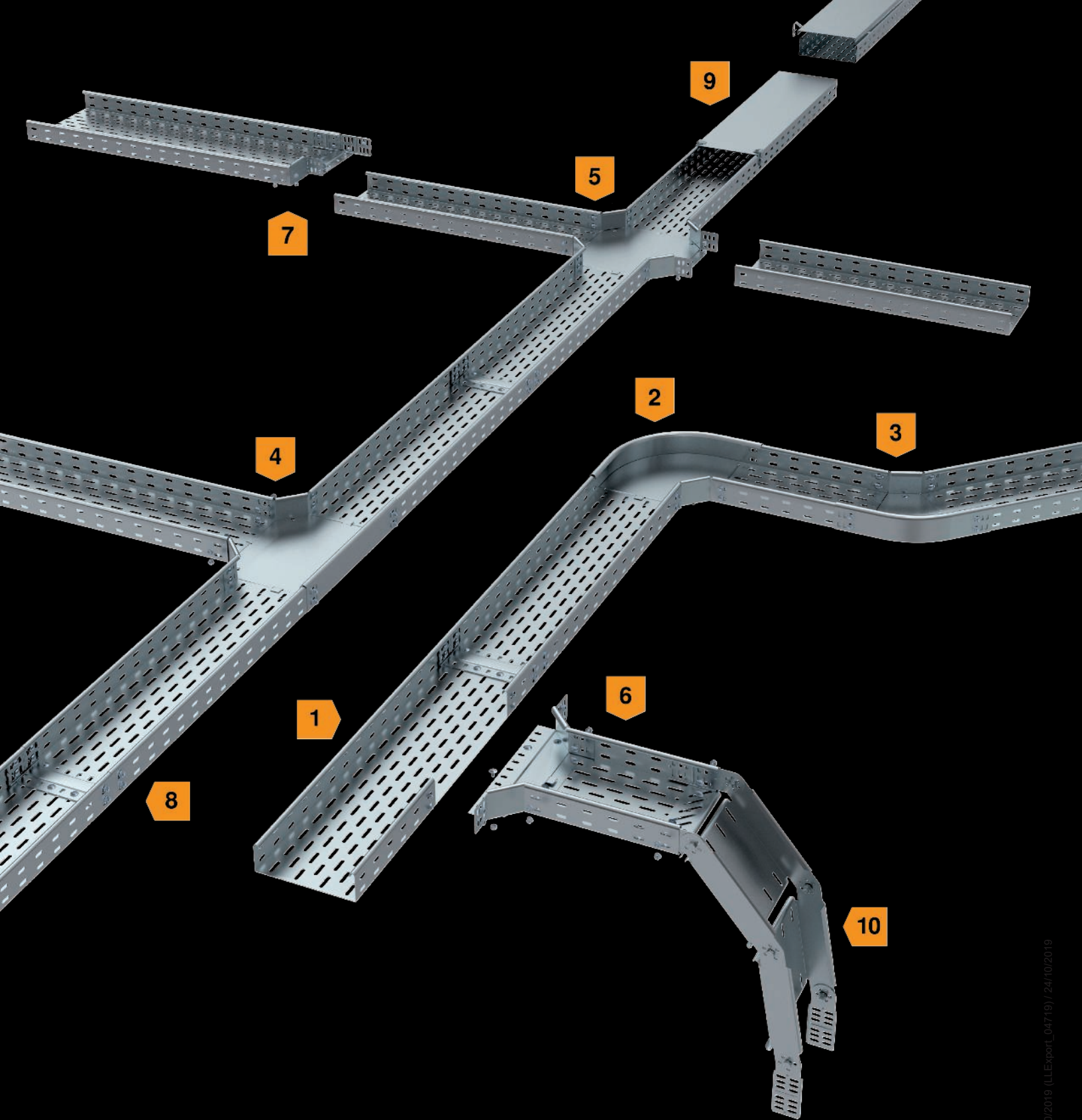
Commitment to quality

- Tested quality (amongst other things, UL, VDE, EMC)
- Robust: Carrying capacity (load capacity) according to DIN EN 61537 tested and confirmed in the OBO BET Test Centre
- Can be used in false ceiling areas of escape and rescue routes: Proven mechanical stability of 30 minutes in cases of fire

Medium-duty and heavy-duty cable tray system

- Material thickness 1.0 mm or 1.5 mm depending on version
- Various system heights and widths
- Also available as an unperforated version
- Wall and ceiling mounting with threaded rods, suspended supports, wall and support brackets
- The heavy-duty cable tray can be used as a standard support structure for the electrical functionality maintenance classes E60 to E90





1 Cable tray

2 90° bend

3 45° bend

4 Tee

5 Cross-over

6 Add-on tee

7 Reducer/stop-end

8 Straight connectors and joint plate

9 Cover

10 Adjustable bend element

Material

Cable tray MKS

Side height mm	FS Strip galvanised	FT Hot-dip galvanised	A2 Stainless steel	A4 Stainless steel
35	✓	✓		
60	✓	✓	✓	
85	✓			
110	✓		✓	

FS FT A2 A4

Cable tray MKSU

Side height mm	FS Strip galvanised	FT Hot-dip galvanised	A2 Stainless steel	A4 Stainless steel
60	✓	✓	✓	

FS FT A2 A4

Cable tray SKS

Side height mm	FS Strip galvanised	FT Hot-dip galvanised	A2 Stainless steel	A4 Stainless steel
60	✓	✓	✓	✓
85	✓	✓		
110	✓	✓		

FS FT A2 A4

Cable tray SKSU

Side height mm	FS Strip galvanised	FT Hot-dip galvanised	A2 Stainless steel	A4 Stainless steel
60	✓	✓		
110	✓	✓		

FS FT A2 A4

Applications:

FS Strip galvanised

- Indoor use
- Dry room atmosphere
- Without any impact from aggressive pollutants

FT Hot-dip galvanised

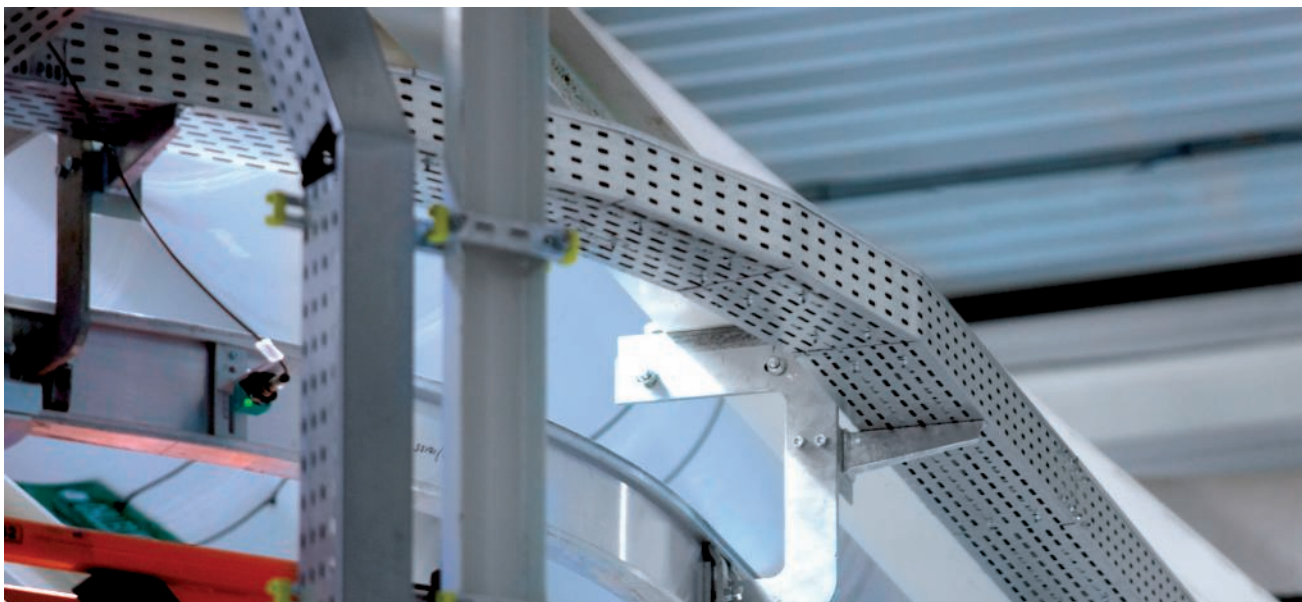
- Exterior areas
- Power station construction
- Systems and machine construction
- Oil and gas industry
- Mining

A2 A4 Stainless steel

- Tunnel construction
- Food industry
- Chemicals and pharmaceuticals industry
- LPG (liquid petroleum gas) applications

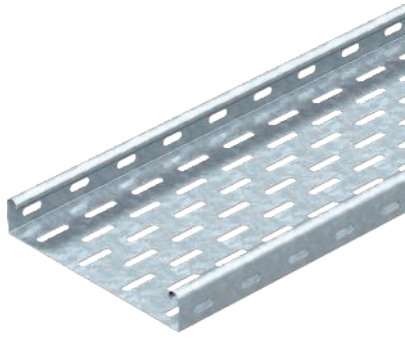


Reference
BMW factory, Spartanburg





Cable tray MKS



Type	Width mm	Plate thickness mm	Pack. m	Weight kg/100 m	Item No.
MKS 310 FS	100	1.00	3	144.134	6053548
MKS 315 FS	150	1.00	3	177.067	6053572
MKS 320 FS	200	1.00	3	210.034	6053599
MKS 330 FS	300	1.00	3	276.000	6053637
MKS 305 FT	50	1.00	3	113.340	6053041
MKS 310 FT	100	1.00	3	153.000	6053106
MKS 315 FT	150	1.00	3	189.000	6053165
MKS 320 FT	200	1.00	3	225.834	6053203
MKS 330 FT	300	1.00	3	295.000	6053300

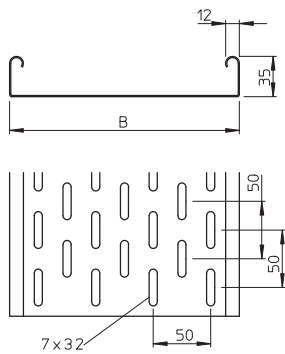
FS Strip-galvanised FT Hot-dip galvanised

/m

MKS 35 = medium duty cable tray system with a side height of 35 mm.

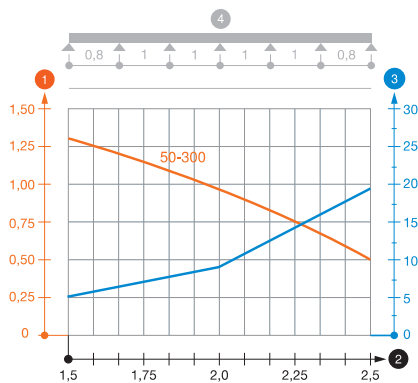
FS version includes RV 35 straight connector set.

Dimensions



Type	Length mm	Dimen- sion B mm	Useful cross- section cm ²
MKS 305 FS	3000	50	16
MKS 310 FS	3000	100	33
MKS 315 FS	3000	150	50.5
MKS 320 FS	3000	200	68
MKS 330 FS	3000	300	103

Load



Type	1.5 m kN/m	2.0 m kN/m	2.5 m kN/m
MKS 305 FS	1.25	0.9	0.5
MKS 310 FS	1.25	0.9	0.5
MKS 315 FS	1.25	0.9	0.5
MKS 320 FS	1.25	0.9	0.5
MKS 330 FS	1.25	0.9	0.5

Load diagram, cable tray, type MKS 35

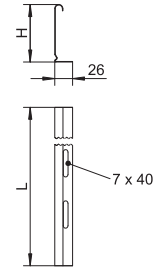
- 1 Permitted cable tray/ladder load in kN/m without man load
- 2 Support width in m
- 3 Rail bend in mm at permitted kN/m
- 4 Load scheme during testing
- Load curve with cable tray/ladder width in mm
- Strut bend curve according to support width

Barrier strip

Type	Dimension H mm	Plate thickness mm	Dimension L mm	Pack. m	Weight kg/100 m	Item No.
TSG 30 FS	30	0.75	3000	3	38.000	6062050
TSG 30 DD	30	0.75	3000	3	38.000	6062314

FS Strip-galvanised **DD** Strip galvanised zinc/aluminium, Double Dip

Barrier strip for separation of cables of different voltages or functions.



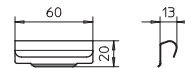
Barrier strip connector

Type	Pack. pcs	Weight kg/100 pcs.	Item No.
TSGV VA4310	10	0.923	6067970

V2A Stainless steel, grade 301

Barrier strip connector for screwless connection of the TSG barrier strip in all side heights.

/pc.



Straight connector

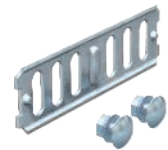
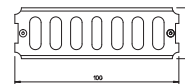
Type	Side height mm	Pack. pcs	Weight kg/100 pcs.	Item No.
RLVK 35 FS	35	10	5.100	6067085
RLVK 35 FT	35	10	5.100	6067301

FS Strip-galvanised **FT** Hot-dip galvanised

Including appropriate fastening material.

Straight connector for connections of cable trays and fittings with a side height of 35 mm.

/pc.



Straight and angle connector

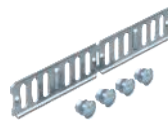
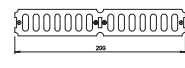
Type	Side height mm	Pack. pcs	Weight kg/100 pcs.	Item No.
RWVL 35 FS	35	10	10.500	6067107
RWVL 35 FT	35	10	10.500	6067328

FS Strip-galvanised **FT** Hot-dip galvanised

Including appropriate fastening material.

Straight and angle connector for cable trays and fittings with a side height of 35 mm.

/pc.



Angle connector

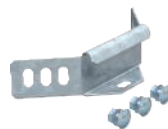
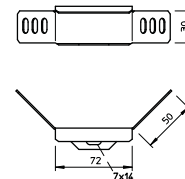
Type	Side height mm	Pack. pcs	Weight kg/100 pcs.	Item No.
WKV 35 FS	35	5	6.800	6043038

FS Strip-galvanised

Including appropriate fastening material.

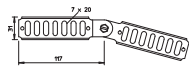
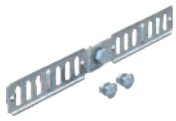
Angle connector for cable trays with a side height of 35 mm.

/pc.



Side height 35

Adjustable connector



Type	Side height mm	Pack. pcs	Weight kg/100 pcs.	Item No.
RGV 35 FS	35	10	11.000	7082002
RGV 35 FT	35	10	11.000	7082126

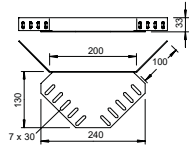
FS Strip-galvanised **FT** Hot-dip galvanised

/pc.

Including appropriate fastening material.

Adjustable connector for cable trays with a side height of 35 mm.

Corner connector



Type	Side height mm	Pack. pcs	Weight kg/100 pcs.	Item No.
REV 35 FS	35	10	39.000	6067956
REV 35 DD	35	10	24.800	6069304

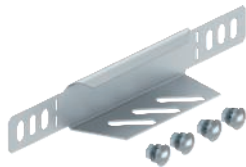
FS Strip-galvanised **DD** Strip galvanised zinc/aluminium, Double Dip

/pc.

Fastening materials should be ordered separately.

Corner connector for cable trays with side height 35 mm.

Reducer/stop-end



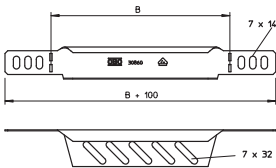
Type	Side height mm	Dimension B mm	Pack. pcs	Weight kg/100 pcs.	Item No.
RWEB 305 FS	35	50	1	4.200	7108052
RWEB 310 FS	35	100	1	7.400	7108109
RWEB 320 FS	35	200	1	12.300	7108206
RWEB 330 FS	35	300	1	18.300	7108311

FS Strip-galvanised

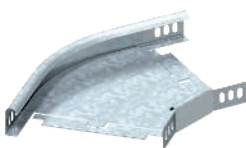
/pc.

From a width of 150 mm, a perforated lower flange is available. Including appropriate fastening material.

Reducer/stop-end for cable trays with side height 35 mm.



45° bend



Type	Width mm	Pack. pcs	Weight kg/100 pcs.	Item No.
RB 45 310 FS	100	1	40.000	6043704
RB 45 320 FS	200	1	60.000	6043712
RB 45 330 FS	300	1	90.000	6043720
RB 45 305 FT	50	1	38.000	7065078
RB 45 310 FT	100	1	43.000	7065116
RB 45 315 FT	150	1	55.000	7065167
RB 45 320 FT	200	1	65.000	7065213
RB 45 330 FT	300	1	97.000	7065310

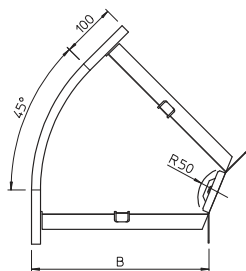
FS Strip-galvanised **FT** Hot-dip galvanised

/pc.

The WKV 35 angle connector is designed for 90° bends and can be adjusted to 45° on-site. The fitting is shipped in an unmounted state.

Including appropriate fastening material.

45° bend, horizontal, for all cable tray types of 35 mm side height.



90° bend

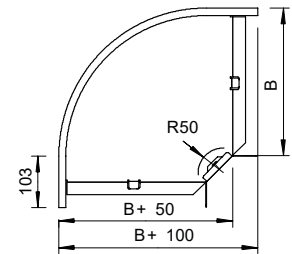
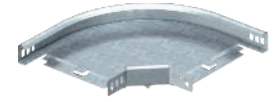
Type	Width mm	Pack. pcs	Weight kg/100 pcs.	Item No.
RB 90 310 FS	100	1	31.100	6043119
RB 90 315 FS	150	1	65.000	6043123
RB 90 320 FS	200	1	64.300	6043127
RB 90 330 FS	300	1	112.300	6043135
RB 90 305 FT	50	1	83.000	7124070
RB 90 310 FT	100	1	48.000	7124120
RB 90 320 FT	200	1	98.000	7124236
RB 90 330 FT	300	1	150.000	7124325

FS Strip-galvanised FT Hot-dip galvanised

/pc.

The fitting is shipped in an unmounted state.
Including appropriate fastening material.

90° bend, horizontal, for all cable tray types of 35 mm side height.



Add-on tee

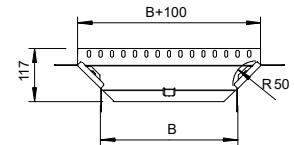
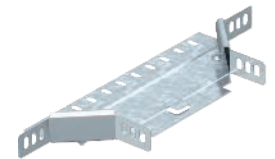
Type	Dimension B mm	Pack. pcs	Weight kg/100 pcs.	Item No.
RAA 305 FS	50	1	31.000	6040314
RAA 310 FS	100	1	30.000	6040322
RAA 320 FS	200	1	35.000	6040349
RAA 330 FS	300	1	50.000	6040357
RAA 305 FT	50	1	33.000	7120060
RAA 310 FT	100	1	33.000	7120117
RAA 315 FT	150	1	37.000	7120140
RAA 320 FT	200	1	38.000	7120214
RAA 330 FT	300	1	55.000	7120311

FS Strip-galvanised FT Hot-dip galvanised

/pc.

The fitting is shipped in an unmounted state.
Including appropriate fastening material.

Add-on tee for horizontal and vertical use. For all cable tray types of 35 mm side height.



90° vertical bend, rising

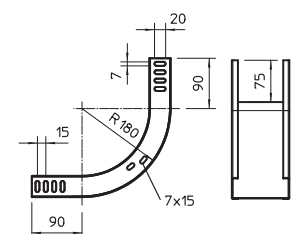
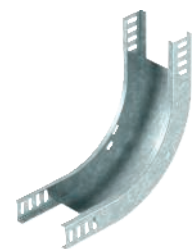
Type	Width mm	Pack. pcs	Weight kg/100 pcs.	Item No.
RBV 305 S FS	50	1	45.000	7007170
RBV 310 S FS	100	1	56.000	7007174
RBV 315 S FS	150	1	66.900	7007178
RBV 320 S FS	200	1	77.900	7007182
RBV 330 S FS	300	1	199.700	7007186
RBV 305 S FT	50	1	45.000	7007172
RBV 310 S FT	100	1	56.000	7007176
RBV 315 S FT	150	1	66.900	7007180
RBV 320 S FT	200	1	77.900	7007184
RBV 330 S FT	300	1	100.700	7007188

FS Strip-galvanised FT Hot-dip galvanised

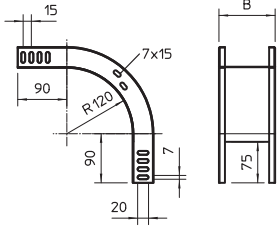
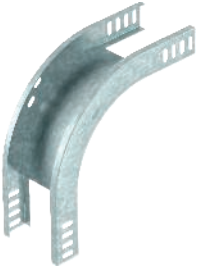
/pc.

The vertical bend is pushed over the end of the cable tray and screwed tight.
Fastening materials should be ordered separately.

90° rising vertical bend, for all cable tray types of 35 mm side height.



90° vertical bend, falling



Type	Width mm	Pack. pcs	Weight kg/100 pcs.	Item No.
RBV 305 F FS	50	1	42.900	7007200
RBV 310 F FS	100	1	51.700	7007204
RBV 315 F FS	150	1	60.500	7007208
RBV 320 F FS	200	1	69.300	7007212
RBV 330 F FS	300	1	86.900	7007216
RBV 305 F FT	50	1	42.900	7007202
RBV 310 F FT	100	1	51.700	7007206
RBV 315 F FT	150	1	60.500	7007210
RBV 320 F FT	200	1	69.300	7007214
RBV 330 F FT	300	1	86.900	7007218

FS Strip-galvanised FT Hot-dip galvanised

/pc.

The vertical bend is pushed over the end of the cable tray and screwed tight. Fastening materials should be ordered separately.

90° vertical bend, falling, for all cable tray types of 35 mm side height.

Cable tray MKS



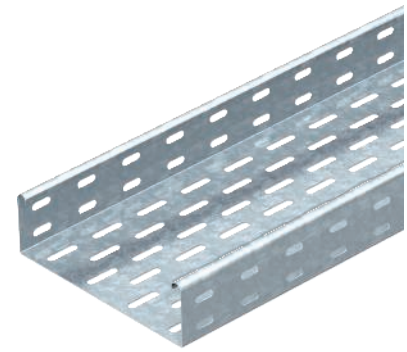
Type	Width mm	Plate thickness mm	Pack. m	Weight kg/100 m	Item No.
MKS 605 FS	50	1.00	3	143.670	6055052
MKS 610 FS	100	1.00	3	173.000	6055109
MKS 615 FS	150	1.00	3	214.000	6055141
MKS 620 FS	200	1.00	3	246.700	6055206
MKS 630 FS	300	1.00	3	312.667	6055303
MKS 640 FS	400	1.00	3	380.000	6055400
MKS 650 FS	500	1.00	3	447.334	6055508
MKS 660 FS	600	1.00	3	498.000	6055524
MKS 605 FT	50	1.00	3	150.000	6055516
MKS 610 FT	100	1.00	3	190.100	6055532
MKS 615 FT	150	1.00	3	225.667	6055559
MKS 620 FT	200	1.00	3	261.000	6055575
MKS 630 FT	300	1.00	3	332.334	6055613
MKS 640 FT	400	1.00	3	403.334	6055664
MKS 650 FT	500	1.00	3	474.667	6055699
MKS 660 FT	600	1.00	3	545.670	6055710

FS Strip-galvanised FT Hot-dip galvanised

/m

Tested for installation above suspended fire protection ceilings (tray widths 100–400 mm, fire load 30 minutes, mounting work and parameters according to fire protection reports).

MKS 60 = medium-duty cable tray system with a side height of 60 mm. FS version includes RV 60 straight connector set.



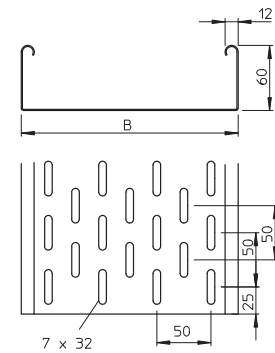
Type	Length mm	Dimen- sion B mm	Useful cross- section cm ²
MKS 605 FS	3000	50	28
MKS 610 FS	3000	100	58
MKS 615 FS	3000	150	88
MKS 620 FS	3000	200	118
MKS 630 FS	3000	300	178
MKS 640 FS	3000	400	238
MKS 650 FS	3000	500	298
MKS 660 FS	3000	600	358

Type	1.5 m kN/m	2.0 m kN/m	2.5 m kN/m
MKS 605 FS	1.5	1	0.5
MKS 610 FS	1.5	1	0.5
MKS 615 FS	1.5	1	0.5
MKS 620 FS	1.5	1	0.5
MKS 630 FS	1.5	1	0.5
MKS 640 FS	1.5	1	0.5
MKS 650 FS	1.5	1	0.5
MKS 660 FS	1.5	1	0.5

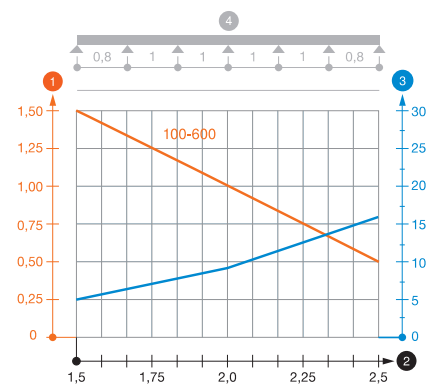
Load diagram, cable tray, type MKS 60

- 1 Permitted cable tray/ladder load in kN/m without man load
- 2 Support width in m
- 3 Rail bend in mm at permitted kN/m
- 4 Load scheme during testing
- Load curve with cable tray/ladder width in mm
- Strut bend curve according to support width

Dimensions



Load



Cable tray MKS



Type	Width mm	Plate thickness mm	Pack. m	Weight kg/100 m	Item No.
MKS 610 VA4301	100	1.00	3	174.334	6056016
MKS 620 VA4301	200	1.00	3	239.000	6056024
MKS 630 VA4301	300	1.00	3	304.667	6056040
MKS 640 VA4301	400	1.00	3	370.000	6056059
MKS 650 VA4301	500	1.00	3	435.000	6056075
MKS 660 VA4301	600	1.00	3	500.000	6056083

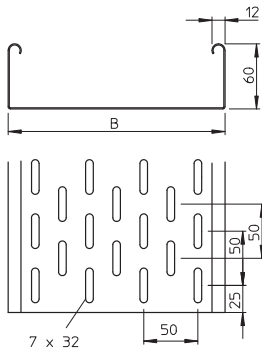
V2A Stainless steel, grade 304

/m

Connecting parts should be ordered in the appropriate quantity.

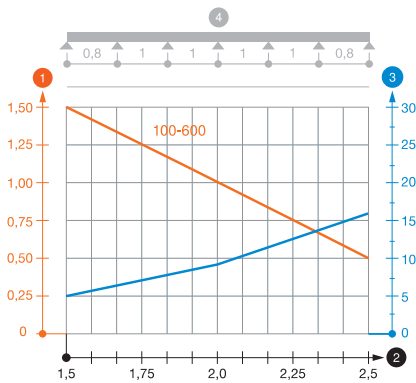
MKS 60 = medium-duty cable tray system with a side height of 60 mm.

Dimensions



Type	Length mm	Dimen- sion B mm	Useful cross- section cm ²
MKS 610 VA4301	3000	100	58
MKS 620 VA4301	3000	200	118
MKS 630 VA4301	3000	300	178
MKS 640 VA4301	3000	400	238
MKS 650 VA4301	3000	500	298
MKS 660 VA4301	3000	600	358

Load



Type	1.5 m kN/m	2.0 m kN/m	2.5 m kN/m
MKS 610 VA4301	1.5	1	0.5
MKS 620 VA4301	1.5	1	0.5
MKS 630 VA4301	1.5	1	0.5
MKS 640 VA4301	1.5	1	0.5
MKS 650 VA4301	1.5	1	0.5
MKS 660 VA4301	1.5	1	0.5

Load diagram, cable tray MKS 60 VA

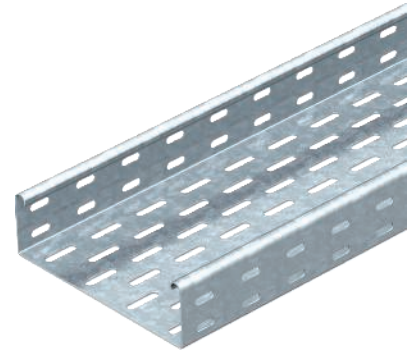
- 1 Permitted cable tray/ladder load in kN/m without man load
- 2 Support width in m
- 3 Rail bend in mm at permitted kN/m
- 4 Load scheme during testing
- Load curve with cable tray/ladder width in mm
- Strut bend curve according to support width

Cable tray SKS



Type	Width mm	Plate thickness mm	Pack. m	Weight kg/100 m	Item No.
SKS 610 FS	100	1.50	3	239.400	6056105
SKS 615 FS	150	1.50	3	316.670	6056156
SKS 620 FS	200	1.50	3	364.000	6056202
SKS 630 FS	300	1.50	3	463.670	6056296
SKS 640 FS	400	1.50	3	564.340	6056407
SKS 650 FS	500	1.50	3	663.340	6056504
SKS 660 FS	600	1.50	3	762.340	6056601
SKS 605 FT	50	1.50	3	207.334	6056632
SKS 610 FT	100	1.50	3	277.000	6056636
SKS 615 FT	150	1.50	3	328.700	6056644
SKS 620 FT	200	1.50	3	380.000	6056652
SKS 630 FT	300	1.50	3	485.670	6056679
SKS 640 FT	400	1.50	3	590.340	6056695
SKS 650 FT	500	1.50	3	694.670	6056717
SKS 660 FT	600	1.50	3	799.000	6056733

FS Strip-galvanised FT Hot-dip galvanised /m

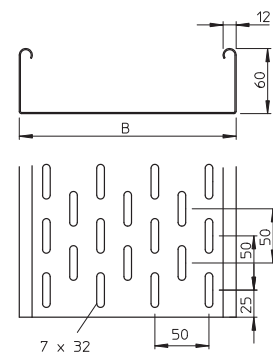


The cable tray, type SKS, should also be used for function maintenance. For additional data, please refer to BSS fire protection systems.

SKS 60 = heavy-duty cable tray system with 60 mm side height.

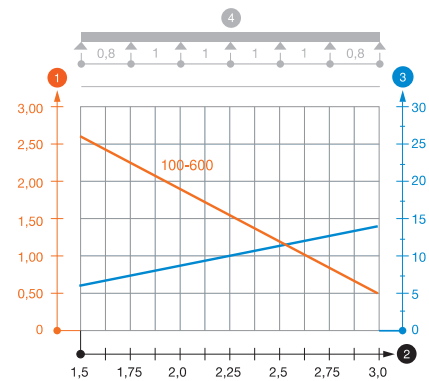
Type	Length mm	Dimen- sion B mm	Useful cross- section cm ²
SKS 610 FS	3000	100	58
SKS 615 FS	3000	150	88
SKS 620 FS	3000	200	118
SKS 630 FS	3000	300	178
SKS 640 FS	3000	400	238
SKS 650 FS	3000	500	298
SKS 660 FS	3000	600	358

Dimensions



Load

Type	1.5 m kN/m	2.0 m kN/m	2.5 m kN/m	3.0 m kN/m
SKS 610 FS	2.65	1.8	1.15	0.5
SKS 615 FS	2.65	1.8	1.15	0.5
SKS 620 FS	2.65	1.8	1.15	0.5
SKS 630 FS	2.65	1.8	1.15	0.5
SKS 640 FS	2.65	1.8	1.15	0.5
SKS 650 FS	2.65	1.8	1.15	0.5
SKS 660 FS	2.65	1.8	1.15	0.5



Load diagram, cable tray, type SKS 60

- 1 Permitted cable tray/ladder load in kN/m without man load
- 2 Support width in m
- 3 Rail bend in mm at permitted kN/m
- 4 Load scheme during testing
- Load curve with cable tray/ladder width in mm
- Strut bend curve according to support width

Cable tray SKS



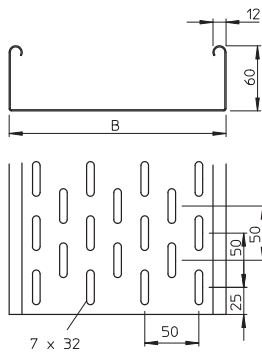
Type	Width mm	Plate thickness mm	Pack. m	Weight kg/100 m	Item No.
SKS 610 VA4301	100	1.50	3	260.000	6056735
SKS 620 VA4301	200	1.50	3	356.670	6056737
SKS 630 VA4301	300	1.50	3	455.340	6056739
SKS 640 VA4301	400	1.50	3	553.670	6056742
SKS 650 VA4301	500	1.50	3	651.340	6056744
SKS 660 VA4301	600	1.50	3	749.340	6056746
SKS 610 VA4571	100	1.50	3	260.000	6056750
SKS 620 VA4571	200	1.50	3	356.670	6056755
SKS 630 VA4571	300	1.50	3	455.340	6056757
SKS 640 VA4571	400	1.50	3	553.670	6056759
SKS 650 VA4571	500	1.50	3	651.340	6056761
SKS 660 VA4571	600	1.50	3	749.340	6056763

V2A Stainless steel, grade 304 V4A Stainless steel, grade 316 Ti

/m

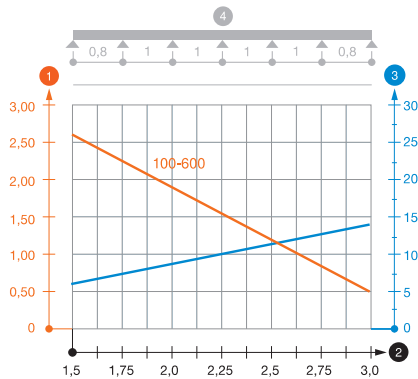
Connecting parts should be ordered in the appropriate quantity.
SKS 60 = heavy-duty cable tray system with 60 mm side height.

Dimensions



Type	Length mm	Useful Dimen- sion B mm	cross- section cm ²
SKS 610 VA4301	3000	100	58
SKS 620 VA4301	3000	200	118
SKS 630 VA4301	3000	300	178
SKS 640 VA4301	3000	400	238
SKS 650 VA4301	3000	500	298
SKS 660 VA4301	3000	600	358

Load



Type	1.5 m kN/m	2.0 m kN/m	2.5 m kN/m	3.0 m kN/m
SKS 610 VA4301	2.65	1.8	1.15	0.5
SKS 620 VA4301	2.65	1.8	1.15	0.5
SKS 630 VA4301	2.65	1.8	1.15	0.5
SKS 640 VA4301	2.65	1.8	1.15	0.5
SKS 650 VA4301	2.65	1.8	1.15	0.5
SKS 660 VA4301	2.65	1.8	1.15	0.5

Load diagram, cable tray, type SKS 60

- 1 Permitted cable tray/ladder load in kN/m without man load
- 2 Support width in m
- 3 Rail bend in mm at permitted kN/m
- 4 Load scheme during testing
- Load curve with cable tray/ladder width in mm
- Strut bend curve according to support width

Cable tray MKSU



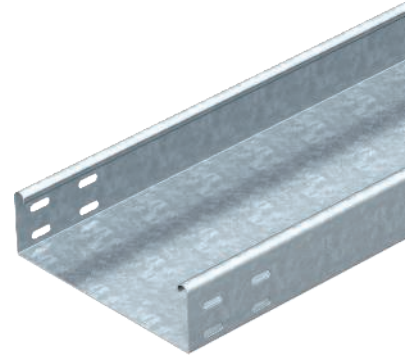
Type	Width mm	Plate thickness mm	Pack. m	Weight kg/100 m	Item No.
MKSU 610 FS	100	1.00	3	189.000	6063160
MKSU 615 FS	150	1.00	3	229.300	6063179
MKSU 620 FS	200	1.00	3	266.700	6063187
MKSU 630 FS	300	1.00	3	347.000	6063209
MKSU 640 FS	400	1.00	3	426.000	6063225
MKSU 610 FT	100	1.00	3	201.000	6064302
MKSU 615 FT	150	1.00	3	250.000	6064319
MKSU 620 FT	200	1.00	3	290.000	6064345
MKSU 630 FT	300	1.00	3	378.000	6064396
MKSU 640 FT	400	1.00	3	464.000	6064426

FS Strip-galvanised FT Hot-dip galvanised

/m

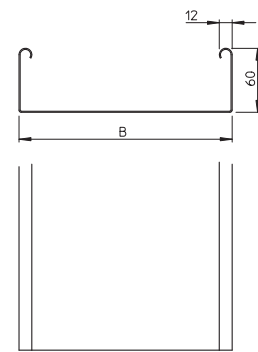
The cable tray has connector perforations on both sides.

MKSU 60 = medium-duty cable tray system, unperforated, with a side height of 60 mm. Straight connectors should be ordered in the appropriate quantity.



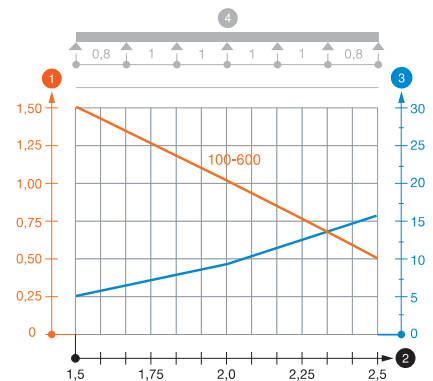
Type	Length mm	Width mm	Useful cross- section cm ²
MKSU 610 FS	3000	100	58
MKSU 615 FS	3000	150	88
MKSU 620 FS	3000	200	118
MKSU 630 FS	3000	300	178
MKSU 640 FS	3000	400	238

Dimensions



Type	1.5 m kN/m	2.0 m kN/m	2.5 m kN/m
MKSU 610 FS	1.5	1	0.5
MKSU 615 FS	1.5	1	0.5
MKSU 620 FS	1.5	1	0.5
MKSU 630 FS	1.5	1	0.5
MKSU 640 FS	1.5	1	0.5

Load



Load diagram, cable tray, type MKSU 60

- 1 Permitted cable tray/ladder load in kN/m without man load
- 2 Support width in m
- 3 Rail bend in mm at permitted kN/m
- 4 Load scheme during testing
- Load curve with cable tray/ladder width in mm
- Strut bend curve according to support width

Side height 60

Cable tray MKSU



Type	Width mm	Plate thickness mm	Pack. m	Weight kg/100 m	Item No.
MKSU 610 VA4301	100	0.80	3	154.000	6063772
MKSU 620 VA4301	200	0.80	3	216.000	6063780
MKSU 630 VA4301	300	0.80	3	280.000	6063799
MKSU 640 VA4301	400	1.00	3	428.340	6063845
MKSU 650 VA4301	500	1.00	3	506.000	6063861
MKSU 660 VA4301	600	1.00	3	584.000	6063888

V2A Stainless steel, grade 304

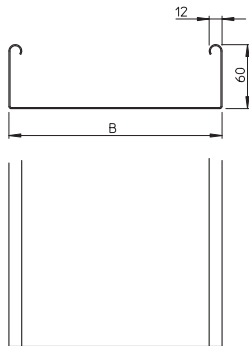
/m

The cable tray has connector perforations on both sides.

Connecting parts should be ordered separately and in the appropriate quantity.

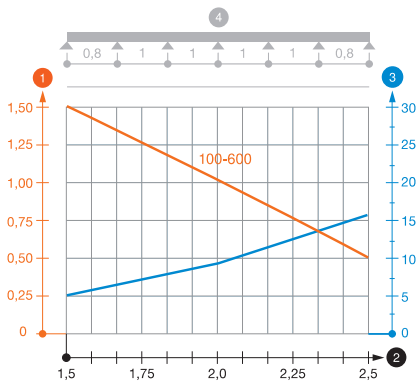
MKSU 60 = medium-duty cable tray system, unperforated, with a side height of 60 mm.

Dimensions



Type	Length mm	Useful Dimen- sion B mm	Useful cross- section cm ²
MKSU 610 VA4301	3000	100	58
MKSU 620 VA4301	3000	200	118
MKSU 630 VA4301	3000	300	178
MKSU 640 VA4301	3000	400	238
MKSU 650 VA4301	3000	500	298
MKSU 660 VA4301	3000	600	358

Load

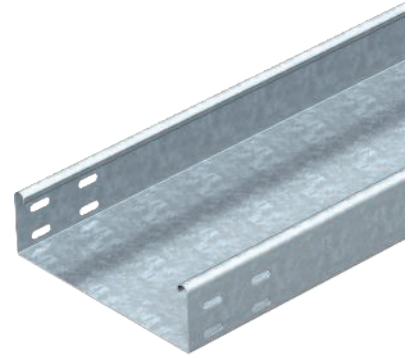


Type	1.5 m kN/m	2.0 m kN/m	2.5 m kN/m
MKSU 610 VA4301	1.5	1	0.5
MKSU 620 VA4301	1.5	1	0.5
MKSU 630 VA4301	1.5	1	0.5
MKSU 640 VA4301	1.5	1	0.5
MKSU 650 VA4301	1.5	1	0.5
MKSU 660 VA4301	1.5	1	0.5

Load diagram, cable tray MKSU 60 VA

- 1 Permitted cable tray/ladder load in kN/m without man load
- 2 Support width in m
- 3 Rail bend in mm at permitted kN/m
- 4 Load scheme during testing
- Load curve with cable tray/ladder width in mm
- Strut bend curve according to support width

Cable tray SKSU



Type	Width mm	Plate thickness mm	Pack. m	Weight kg/100 m	Item No.
SKSU 610 FS	100	1.50	3	286.000	6063234
SKSU 620 FS	200	1.50	3	399.670	6063236
SKSU 630 FS	300	1.50	3	516.000	6063238
SKSU 640 FS	400	1.50	3	639.000	6063950
SKSU 650 FS	500	1.50	3	756.670	6063241
SKSU 660 FS	600	1.50	3	877.000	6063276
SKSU 610 FT	100	1.50	3	302.670	6064307
SKSU 620 FT	200	1.50	3	427.340	6064353
SKSU 630 FT	300	1.50	3	554.670	6064409
SKSU 640 FT	400	1.50	3	687.000	6064435
SKSU 650 FT	500	1.50	3	802.000	6064515
SKSU 660 FT	600	1.50	3	929.670	6064523

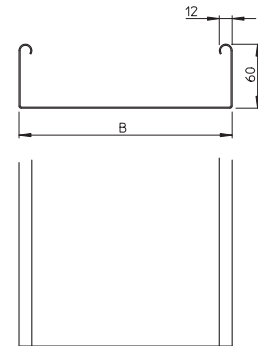
FS Strip-galvanised FT Hot-dip galvanised

/m

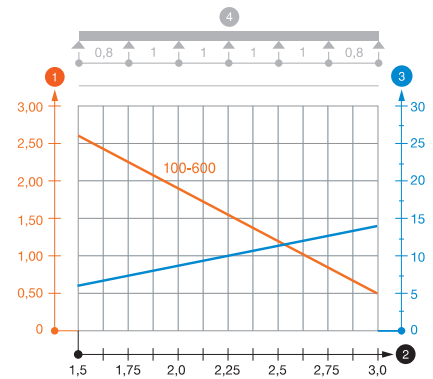
The cable tray has connector perforations on both sides. Straight connectors should be ordered separately and in the appropriate quantity. SKSU 60 = heavy-duty cable tray system, unperforated, with 60 mm side height.

Type	Length mm	Dimen- sion B mm	Useful cross- section cm ²
SKSU 610 FS	3000	100	58
SKSU 620 FS	3000	200	118
SKSU 630 FS	3000	300	178
SKSU 640 FS	3000	400	238
SKSU 650 FS	3000	500	298
SKSU 660 FS	3000	600	358

Dimensions



Load



Type	1.5 m kN/m	2.0 m kN/m	2.5 m kN/m	3.0 m kN/m
SKSU 610 FS	2.6	1.9	1.1	0.55
SKSU 620 FS	2.6	1.9	1.1	0.55
SKSU 630 FS	2.6	1.9	1.1	0.55
SKSU 640 FS	2.6	1.9	1.1	0.55
SKSU 650 FS	2.6	1.9	1.1	0.55
SKSU 660 FS	2.6	1.9	1.1	0.55

Load diagram, cable tray, type SKSU 60

- 1 Permitted cable tray/ladder load in kN/m without man load
- 2 Support width in m
- 3 Rail bend in mm at permitted kN/m
- 4 Load scheme during testing
- Load curve with cable tray/ladder width in mm
- Strut bend curve according to support width

Barrier strip

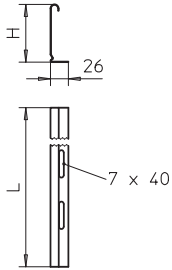


Type	Dimension H mm	Plate thickness mm	Dimension L mm	Pack. m	Weight kg/100 m	Item No.
TSG 45 FS	45	0.75	3000	3	46.700	6062033
TSG 45 DD	45	0.75	3000	3	46.800	6062321
TSG 45 VA4301	45	0.75	3000	3	47.000	6062025
TSG 45 VA4571	45	0.75	3000	3	48.000	6062028

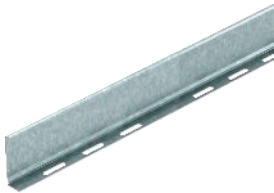
FS Strip-galvanised **DD** Strip galvanised zinc/aluminium, Double Dip

/m

Barrier strip for separation of cables of different voltages or functions.



Barrier strip

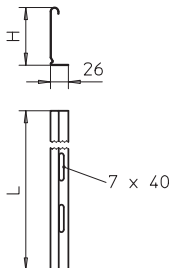


Type	Dimension H mm	Plate thickness mm	Dimension L mm	Pack. m	Weight kg/100 m	Item No.
TSG 60 FS	60	0.75	3000	3	55.700	6062068
TSG 60 DD	60	0.75	3000	3	55.700	6062327
TSG 60 VA4301	60	0.75	3000	3	55.000	6062084
TSG 60 VA4571	60	0.75	3000	3	56.670	6062086

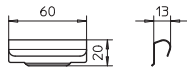
FS Strip-galvanised **DD** Strip galvanised zinc/aluminium, Double Dip

/m

Barrier strip for separation of cables of different voltages or functions.



Barrier strip connector



Type	Pack. pcs	Weight kg/100 pcs.	Item No.
TSGV VA4310	10	0.923	6067970

V2A Stainless steel, grade 301

/pc.

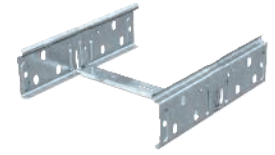
Barrier strip connector for screwless connection of the TSG barrier strip in all side heights.

Straight connector set

Type	Side height mm	Width mm	Pack. Weight		Item No.
			pcs	kg/100 pcs.	
RV 605 FS	60	50	10	18.100	6068146
RV 607 FS	60	75	10	18.800	6068150
RV 610 FS	60	100	10	19.400	6068154
RV 615 FS	60	150	10	20.700	6068162
RV 620 FS	60	200	10	20.900	6068170
RV 630 FS	60	300	10	24.500	6068189
RV 640 FS	60	400	10	32.200	6068197
RV 650 FS	60	500	10	36.200	6068200
RV 660 FS	60	600	10	39.200	6068219

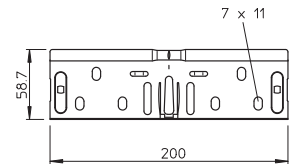
FS Strip-galvanised

/pc.



The continuous earthing connection is guaranteed without a screw connection.

Quick connector set for straight, screwless connections of cable trays and fittings with a side height of 60 mm.

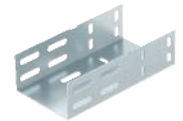
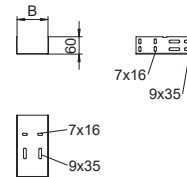


Connector for expansion compensation

Type	Side height mm	Width mm	Pack. Weight		Item No.
			pcs	kg/100 pcs.	
RDV 610 DD	60	100	2	56.300	6065974
RDV 620 DD	60	200	2	81.800	6065976
RDV 630 DD	60	300	2	104.300	6065978
RDV 640 DD	60	400	2	129.600	6065980
RDV 650 DD	60	500	2	152.200	6065982
RDV 660 DD	60	600	2	177.600	6065984

DD Strip galvanised zinc/aluminium, Double Dip

/pc.



Straight connector for compensation of linear thermal expansion.

Installation

Positioning of expansion connectors

Metal temperature difference	Maximum spacing between expansion connectors
10°C	70 metres
25°C	47 metres
40°C	35 metres
50°C	28 metres
65°C	23 metres
80°C	20 metres

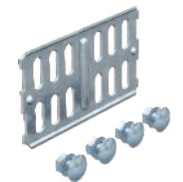
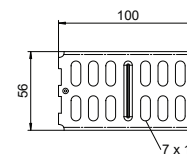
Further information can be found in our mounting instructions.

Straight connector

Type	Side height mm	Pack. Weight		Item No.
		pcs	kg/100 pcs.	
RLVK 60 FS	60	10	9.200	6067093
RLVK 60 FT	60	10	10.700	6067603
RLVK 60 VA4301	60	10	8.800	6067654
RLVK 60 VA4571	60	10	9.795	6067675

FS Strip-galvanised FT Hot-dip galvanised

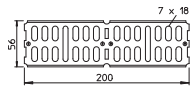
/pc.



Including appropriate fastening material.

Straight connector for straight connection of cable trays and fittings with a side height of 60 mm.

Angle connector



Type	Side height mm	Pack. pcs	Weight kg/100 pcs.	Item No.
RWVL 60 FS	60	10	15.600	6067115
RWVL 60 FT	60	10	17.400	6067611
RWVL 60 VA4301	60	10	17.500	6067662
RWVL 60 VA4571	60	10	16.229	6067664

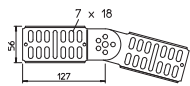
FS Strip-galvanised **FT** Hot-dip galvanised

/pc.

Including appropriate fastening material.

Straight and angle connector for cable trays and fittings with a side height of 60 mm.

Adjustable connector



Type	Side height mm	Pack. pcs	Weight kg/100 pcs.	Item No.
RGV 60 FS	60	10	25.100	7082010
RGV 60 FT	60	10	26.100	7082223
RGV 60 VA4301	60	10	25.100	7082258
RGV 60 VA4571	60	10	25.100	7082265

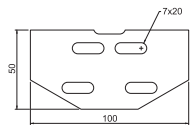
FS Strip-galvanised **FT** Hot-dip galvanised

/pc.

Including appropriate fastening material.

Adjustable connector for cable trays with a side height of 60 mm.

Straight connector, vertical



Type	Side height mm	Pack. pcs	Weight kg/100 pcs.	Item No.
RLVKV 60 FS	60	10	4.550	6067101

FS Strip-galvanised

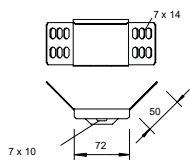
/pc.

The screw fastening ensures the continuity of the equipotential bonding.

The vertical straight connector can be used to connect cable trays with the side height 60 mm.

Mitre joints that rise and fall up to an angle of 60° can also be realised with this connector.

Angle connector



Type	Side height mm	Pack. pcs	Weight kg/100 pcs.	Item No.
WKV 60 FS	60	5	14.700	6043062
WKV 60 FT	60	5	15.800	6042910

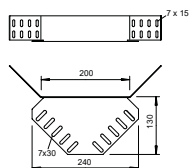
FS Strip-galvanised **FT** Hot-dip galvanised

/pc.

Including appropriate fastening material.

Angle connector for cable trays with a side height of 60 mm.

Corner connector



Type	Side height mm	Pack. pcs	Weight kg/100 pcs.	Item No.
REV 60 FS	60	10	49.000	6067972
REV 60 DD	60	10	32.000	6069410
REV 60 VA4301	60	5	32.500	6068022
REV 60 VA4571	60	5	32.500	6068054

FS Strip-galvanised **DD** Strip galvanised zinc/aluminium, Double Dip

/pc.

Fastening materials should be ordered separately.

Corner connector for cable trays with side height 60 mm.

Reducer/stop-end

Type	Side height mm	Dimension B mm	Pack. pcs	Weight kg/100 pcs.	Item No.
RWEB 610 FS	60	100	1	8.800	7109105
RWEB 615 FS	60	150	1	13.600	7109156
RWEB 620 FS	60	200	1	17.600	7109202
RWEB 630 FS	60	300	1	25.600	7109296
RWEB 640 FS	60	400	1	33.500	7109407
RWEB 650 FS	60	500	1	41.500	7109504
RWEB 660 FS	60	600	1	49.500	7109601
RWEB 605 DD	60	50	1	5.200	7107145
RWEB 610 DD	60	100	1	8.600	7106106
RWEB 615 DD	60	150	1	13.400	7106110
RWEB 620 DD	60	200	1	17.500	7106114
RWEB 630 DD	60	300	1	25.400	7106118
RWEB 640 DD	60	400	1	33.000	7106122
RWEB 645 DD	60	450	1	37.000	7106124
RWEB 650 DD	60	500	1	41.300	7106126
RWEB 660 DD	60	600	1	49.200	7106130
RWEB 610 VA4301	60	100	1	9.000	7109814
RWEB 620 VA4301	60	200	1	18.000	7109830
RWEB 630 VA4301	60	300	1	26.000	7109857
RWEB 640 VA4301	60	400	1	34.000	7109873
RWEB 650 VA4301	60	500	1	42.000	7109903
RWEB 660 VA4301	60	600	1	49.000	7109938
RWEB 615 VA4301	60	150	1	13.400	7109816

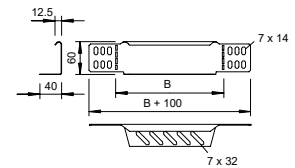
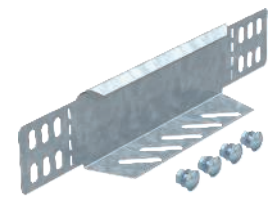
FS Strip-galvanised DD Strip galvanised zinc/aluminium, Double Dip

/pc.

From a width of 150 mm, a perforated lower flange is available.

Including appropriate fastening material.

Reducer and end closure plate for cable trays with side height 60 mm.



45° bend

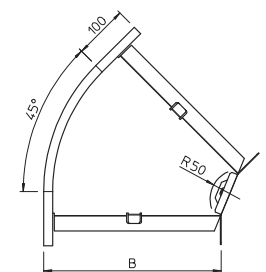
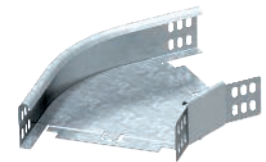
Type	Dimension B mm	Pack. pcs	Weight kg/100 pcs.	Item No.
RB 45 610 FS	100	1	35.000	6043763
RB 45 615 FS	150	1	75.000	6043755
RB 45 620 FS	200	1	80.800	6043771
RB 45 630 FS	300	1	82.000	6043798
RB 45 605 FT	50	1	53.000	7066102
RB 45 610 FT	100	1	60.000	7066112
RB 45 615 FT	150	1	80.000	7066158
RB 45 620 FT	200	1	87.400	7066228
RB 45 630 FT	300	1	110.000	7066317
RB45 610 VA4301	100	1	45.000	7133107
RB45 620 VA4301	200	1	80.900	7133120
RB45 630 VA4301	300	1	100.000	7133142
RB45 610 VA4571	100	1	45.000	7133261
RB45 620 VA4571	200	1	80.900	7133263
RB45 630 VA4571	300	1	100.000	7133265

FS Strip-galvanised GB Stained FT Hot-dip galvanised

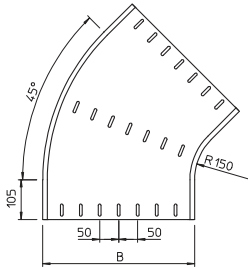
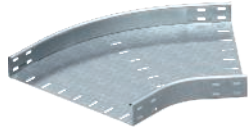
/pc.

The fitting is shipped in an unmounted state. The WKV 60 angle connector is designed for 90° bends and can be adjusted to 45° on-site.

Including appropriate fastening material.



45° bend



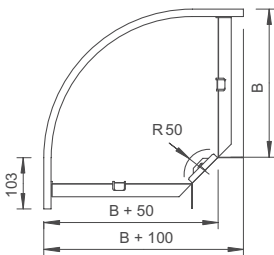
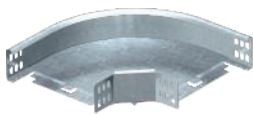
Type	Dimension B mm	Pack. pcs	Weight kg/100 pcs.	Item No.
RB 45 640 FS	400	1	301.000	7000383
RB 45 650 FS	500	1	386.000	7000405
RB 45 660 FS	600	1	465.000	7000421
RB 45 640 FT	400	1	301.000	7066406
RB 45 650 FT	500	1	386.000	7066503
RB 45 660 FT	600	1	500.000	7066600
RB 45 640VA4301	400	1	250.000	7133235
RB 45 650VA4301	500	1	350.000	7133243
RB 45 660VA4301	600	1	465.000	7133251
RB 45 640VA4571	400	1	250.000	7133271
RB 45 650VA4571	500	1	350.000	7133273
RB 45 660VA4571	600	1	465.000	7133275

FS Strip-galvanised GB Stained FT Hot-dip galvanised

/pc.

Fastening materials should be ordered separately.

90° bend



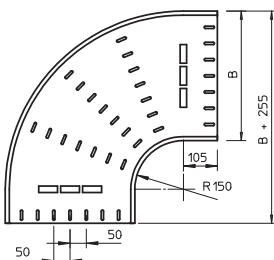
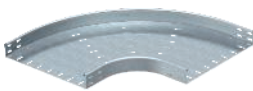
Type	Dimension B mm	Pack. pcs	Weight kg/100 pcs.	Item No.
RB 90 610 FS	100	1	56.000	6043216
RB 90 615 FS	150	1	86.000	6043208
RB 90 620 FS	200	1	110.300	6043224
RB 90 630 FS	300	1	165.000	6043232
RB 90 605 FT	50	1	98.000	7125098
RB 90 610 FT	100	1	60.000	7125100
RB 90 615 FT	150	1	93.000	7125189
RB 90 620 FT	200	1	119.600	7125220
RB 90 630 FT	300	1	179.500	7125305
RB90 610 VA4301	100	1	125.000	7134122
RB90 620 VA4301	200	1	110.400	7134130
RB90 630 VA4301	300	1	165.000	7134138
RB90 610 VA4571	100	1	125.000	7134286
RB90 620 VA4571	200	1	111.900	7134288
RB90 630 VA4571	300	1	165.000	7134290

FS Strip-galvanised GB Stained FT Hot-dip galvanised

/pc.

The fitting is shipped in an unmounted state. Including appropriate fastening material.

90° bend



Type	Width mm	Pack. pcs	Weight kg/100 pcs.	Item No.
RB 90 640 FS	400	1	472.300	7001290
RB 90 650 FS	500	1	527.000	7001304
RB 90 660 FS	600	1	680.000	7001312
RB 90 640 FT	400	1	507.000	7125410
RB 90 650 FT	500	1	559.000	7125526
RB 90 660 FT	600	1	721.500	7125585
RB 90 640VA4301	400	1	465.000	7134231
RB 90 650VA4301	500	1	610.000	7134258
RB 90 660VA4301	600	1	770.000	7134266
RB 90 640VA4571	400	1	465.000	7134292
RB 90 650VA4571	500	1	610.000	7134294
RB 90 660VA4571	600	1	770.000	7134296

FS Strip-galvanised GB Stained FT Hot-dip galvanised

/pc.

Fitting in round design. The interior radius of the fitting is 150 mm. Fastening materials should be ordered separately.

Add-on tee

Type	Dimension B mm	Pack. pcs	Weight kg/100 pcs.	Item No.
RAA 610 FS	100	1	43.000	6040403
RAA 615 FS	150	1	38.000	6040411
RAA 620 FS	200	1	40.000	6040438
RAA 630 FS	300	1	50.000	6040446
RAA 605 FT	50	1	176.000	7121103
RAA 610 FT	100	1	60.000	7121109
RAA 615 FT	150	1	41.000	7121205
RAA 620 FT	200	1	43.000	7121210
RAA 630 FT	300	1	55.000	7121318
RAA 610 VA4301	100	1	43.000	7136120
RAA 620 VA4301	200	1	40.000	7136133
RAA 630 VA4301	300	1	50.000	7136141
RAA 610 VA4571	100	1	43.000	7136122
RAA 630 VA4571	300	1	50.000	7136143
RAA 620 VA4571	200	1	40.000	7136135

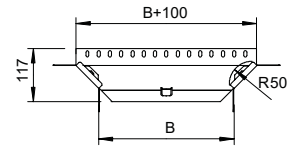
FS Strip-galvanised FT Hot-dip galvanised

/pc.

The fitting is shipped in an unmounted state.

Including appropriate fastening material.

Add-on tee for horizontal and vertical use.



Add-on tee

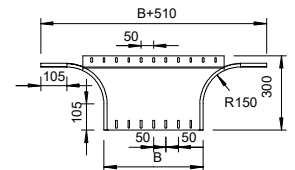
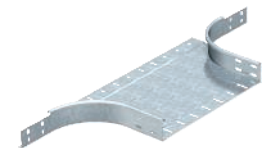
Type	Dimension B mm	Pack. pcs	Weight kg/100 pcs.	Item No.
RAA 640 FS	400	1	220.000	7002394
RAA 650 FS	500	1	255.000	7002416
RAA 660 FS	600	1	285.000	7002432
RAA 640 FT	400	1	240.000	7121407
RAA 650 FT	500	1	280.000	7121504
RAA 660 FT	600	1	310.000	7121601
RAA 640 VA4301	400	1	220.000	7136242
RAA 650 VA4301	500	1	255.000	7136250
RAA 660 VA4301	600	1	285.000	7136269
RAA 640 VA4571	400	1	220.000	7136244
RAA 650 VA4571	500	1	255.000	7136252
RAA 660 VA4571	600	1	285.000	7136271

FS Strip-galvanised GB Stained FT Hot-dip galvanised

/pc.

Fastening materials should be ordered separately.

Add-on tee for horizontal and vertical use.



Tee

Type	Width mm	Pack. pcs	Weight kg/100 pcs.	Item No.
RT 610 FS	100	1	78.000	6043410
RT 615 FS	150	1	101.000	6043402
RT 620 FS	200	1	128.000	6043429
RT 630 FS	300	1	193.000	6043437
RT 610 FT	100	1	84.000	7117116
RT 615 FT	150	1	109.000	7117162
RT 620 FT	200	1	138.000	7117209
RT 630 FT	300	1	204.000	7117306

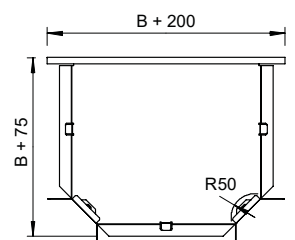
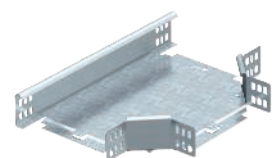
FS Strip-galvanised FT Hot-dip galvanised

/pc.

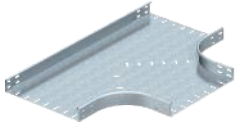
The fitting is shipped in an unmounted state. All the sides are designed for the same cable tray width.

Including appropriate fastening material.

Horizontal tee, for all cable tray types of 60 mm side height.



Tee



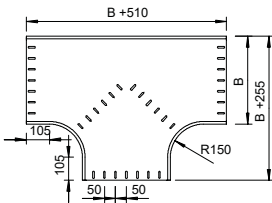
Type	Width mm	Pack. pcs	Weight kg/100 pcs.	Item No.
RT 640 FS	400	1	697.000	7003390
RT 650 FS	500	1	804.000	7003412
RT 660 FS	600	1	1,001.000	7003439
RT 640 FT	400	1	746.000	7117396
RT 650 FT	500	1	804.500	7117507
RT 660 FT	600	1	1,001.700	7117604

FS Strip-galvanised FT Hot-dip galvanised /pc.

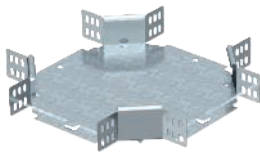
Fitting in round design. The interior radius of the fitting is 150 mm. All the sides are designed for the same cable tray width.

Fastening materials should be ordered separately.

Horizontal tee, for all cable tray types of 60 mm side height.



Cross-over

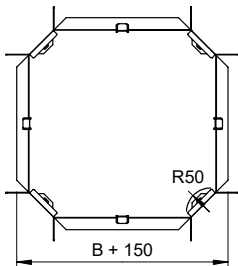


Type	Width mm	Pack. pcs	Weight kg/100 pcs.	Item No.
RK 610 FS	100	1	87.000	6043615
RK 615 FS	150	1	108.000	6043607
RK 620 FS	200	1	110.900	6043623
RK 630 FS	300	1	195.000	6043631
RK 610 FT	100	1	93.000	7113110
RK 620 FT	200	1	144.000	7113218
RK 630 FT	300	1	268.000	7113315

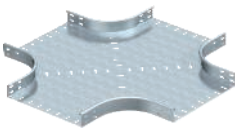
FS Strip-galvanised FT Hot-dip galvanised /pc.

The fitting is shipped in an unmounted state. All the sides are designed for the same cable tray width. Including appropriate fastening material.

Horizontal cross-over for all cable tray types of 60 mm side height.



Cross-over



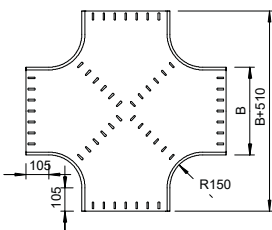
Type	Width mm	Pack. pcs	Weight kg/100 pcs.	Item No.
RK 640 FS	400	1	800.000	7004397
RK 650 FS	500	1	1,120.000	7004419
RK 660 FS	600	1	1,291.000	7004435
RK 640 FT	400	1	860.000	7113404
RK 650 FT	500	1	1,190.000	7113501
RK 660 FT	600	1	1,370.000	7113609

FS Strip-galvanised FT Hot-dip galvanised /pc.

Fitting in a round design. The interior radius of the fitting is 150 mm. All the sides are designed for the same cable tray width.

Fastening materials should be ordered separately.

Horizontal cross-over for all cable tray types of 60 mm side height.



90° vertical bend, rising

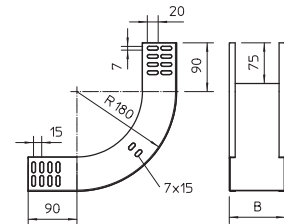
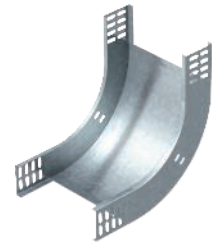
Type	Side height mm	Dimension B mm	Pack. pcs	Weight kg/100 pcs.	Item No.
RBV 605 S FS	60	50	1	50.000	7007001
RBV 610 S FS	60	100	1	66.000	7007005
RBV 615 S FS	60	150	1	78.000	7007009
RBV 620 S FS	60	200	1	95.000	7007013
RBV 630 S FS	60	300	1	124.000	7007017
RBV 640 S FS	60	400	1	153.000	7007021
RBV 650 S FS	60	500	1	181.000	7007025
RBV 660 S FS	60	600	1	210.000	7007029
RBV 605 S FT	60	50	1	54.000	7007002
RBV 610 S FT	60	100	1	71.000	7007006
RBV 615 S FT	60	150	1	84.000	7007010
RBV 620 S FT	60	200	1	103.000	7007014
RBV 630 S FT	60	300	1	134.000	7007018
RBV 640 S FT	60	400	1	163.000	7007022
RBV 650 S FT	60	500	1	190.000	7007026
RBV 660 S FT	60	600	1	221.000	7007030
RBV 610 S VA4301	60	100	1	66.000	7007105
RBV 615 S VA4301	60	150	1	84.000	7007107
RBV 620 S VA4301	60	200	1	109.000	7007109
RBV 630 S VA4301	60	300	1	145.000	7007113
RBV 640 S VA4301	60	400	1	181.000	7007117
RBV 650 S VA4301	60	500	1	216.000	7007119
RBV 660 S VA4301	60	600	1	252.000	7007121
RBV 610 S VA4571	60	100	1	73.000	7006720
RBV 620 S VA4571	60	200	1	105.000	7006724
RBV 630 S VA4571	60	300	1	145.000	7006728
RBV 640 S VA4571	60	400	1	181.000	7006732
RBV 650 S VA4571	60	500	1	216.000	7006736
RBV 660 S VA4571	60	600	1	252.000	7006740

FS Strip-galvanised FT Hot-dip galvanised

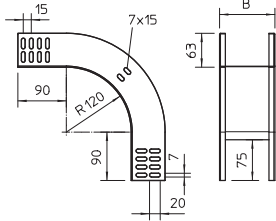
/pc.

The vertical bend is pushed over the end of the cable tray and screwed tight. Fastening materials should be ordered separately.

90° rising vertical bend, for all cable tray types of 60 mm side height.



90° vertical bend, falling



Type	Side height mm	Dimension B mm	Pack. pcs	Weight kg/100 pcs.	Item No.
RBV 605 F FS	60	50	1	49.000	7007051
RBV 610 F FS	60	100	1	61.000	7007055
RBV 615 F FS	60	150	1	73.000	7007059
RBV 620 F FS	60	200	1	84.000	7007063
RBV 630 F FS	60	300	1	107.000	7007067
RBV 640 F FS	60	400	1	130.000	7007071
RBV 650 F FS	60	500	1	153.000	7007075
RBV 660 F FS	60	600	1	176.000	7007079
RBV 605 F FT	60	50	1	53.000	7007052
RBV 610 F FT	60	100	1	66.000	7007056
RBV 615 F FT	60	150	1	80.000	7007060
RBV 620 F FT	60	200	1	92.000	7007064
RBV 630 F FT	60	300	1	116.000	7007068
RBV 640 F FT	60	400	1	142.000	7007072
RBV 650 F FT	60	500	1	167.000	7007076
RBV 660 F FT	60	600	1	192.000	7007080
RBV 610 F VA4301	60	100	1	61.000	7007155
RBV 615 F VA4301	60	150	1	73.000	7007156
RBV 620 F VA4301	60	200	1	84.000	7007157
RBV 630 F VA4301	60	300	1	107.000	7007159
RBV 640 F VA4301	60	400	1	130.000	7007161
RBV 650 F VA4301	60	500	1	153.000	7007163
RBV 660 F VA4301	60	600	1	176.000	7007165
RBV 610 F VA4571	60	100	1	61.000	7006750
RBV 620 F VA4571	60	200	1	84.000	7006754
RBV 630 F VA4571	60	300	1	107.000	7006758
RBV 640 F VA4571	60	400	1	130.000	7006762
RBV 650 F VA4571	60	500	1	153.000	7006766
RBV 660 F VA4571	60	600	1	176.000	7006770

FS Strip-galvanised FT Hot-dip galvanised

/pc.

The vertical bend is pushed over the end of the cable tray and screwed tight. Fastening materials should be ordered separately.

90° vertical bend, falling, for all cable tray types of 60 mm side height.

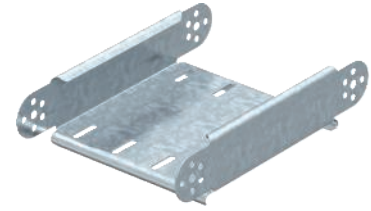
Adjustable vertical bend element

Type	Width mm	Pack. pcs	Weight kg/100 pcs.	Item No.
RGBEV 610 FS	100	1	48.100	7005326
RGBEV 615 FS	150	1	63.700	7005334
RGBEV 620 FS	200	1	63.600	7005342
RGBEV 630 FS	300	1	80.400	7005369
RGBEV 640 FS	400	1	114.000	7005385
RGBEV 650 FS	500	1	134.000	7005407
RGBEV 660 FS	600	1	155.900	7005423
RGBEV 610 FT	100	1	52.400	7075103
RGBEV 615 FT	150	1	60.300	7075154
RGBEV 620 FT	200	1	69.300	7075200
RGBEV 630 FT	300	1	87.600	7075308
RGBEV 640 FT	400	1	123.000	7075405
RGBEV 650 FT	500	1	144.000	7075502
RGBEV 660 FT	600	1	167.200	7075596

FS Strip-galvanised FT Hot-dip galvanised

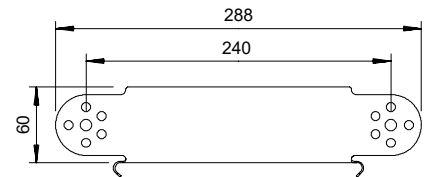
/pc.

RGV 60 adjustable connectors should be ordered separately and in the appropriate quantity.



Dimensions

Type	Width mm	Plate thickness mm
RGBEV 610 FS	100	1.00
RGBEV 615 FS	150	1.00
RGBEV 620 FS	200	1.00
RGBEV 630 FS	300	1.00
RGBEV 640 FS	400	1.00
RGBEV 650 FS	500	1.00
RGBEV 660 FS	600	1.00

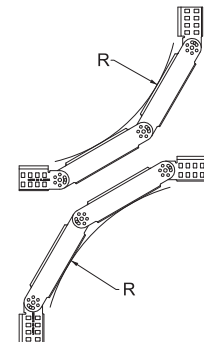


Radius table

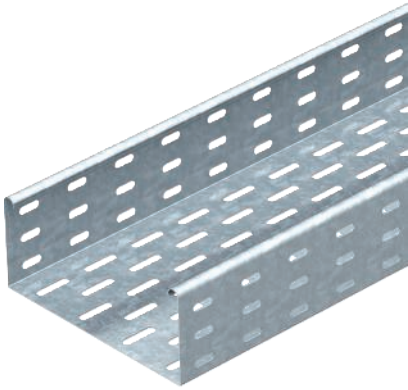
Quantity of elements	Radius
1	approx. 300 mm
2	approx. 450 mm
3	approx. 600 mm
4	approx. 750 mm
5	approx. 900 mm

Please order two RGV 60 adjustable connectors separately.

Installation



Cable tray MKS



Type	Width mm	Plate thickness mm	Pack. m	Weight kg/100 m	Item No.
MKS 810 FS	100	1.00	3	207.670	6057101
MKS 820 FS	200	1.00	3	292.334	6057209
MKS 830 FS	300	1.00	3	357.667	6057306
MKS 840 FS	400	1.00	3	423.000	6057403
MKS 850 FS	500	1.00	3	488.000	6057500
MKS 860 FS	600	1.00	3	553.000	6057535

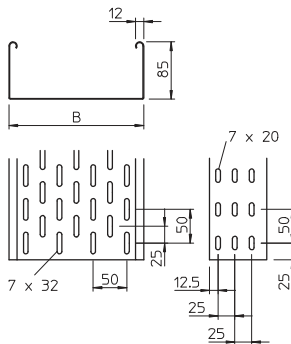
FS Strip-galvanised

/m

Including connector, type RLVL 85.

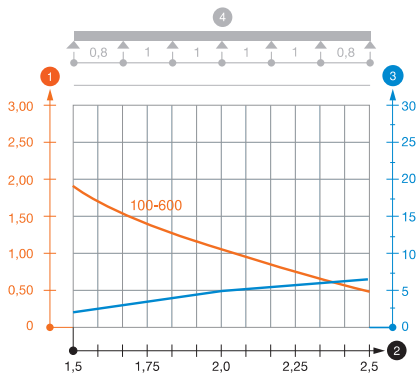
MKS 85 = medium-duty cable tray system with a side height of 85 mm.

Dimensions



Type	Length mm	Dimen- sion B mm	Useful cross- section cm ²
MKS 810 FS	3000	100	83
MKS 820 FS	3000	200	186
MKS 830 FS	3000	300	253
MKS 840 FS	3000	400	338
MKS 850 FS	3000	500	423
MKS 860 FS	3000	600	508

Load



Type	1.5 m kN/m	2.0 m kN/m	2.5 m kN/m
MKS 810 FS	1.75	1.1	0.5
MKS 820 FS	1.75	1.1	0.5
MKS 830 FS	1.75	1.1	0.5
MKS 840 FS	1.75	1.1	0.5
MKS 850 FS	1.75	1.1	0.5
MKS 860 FS	1.75	1.1	0.5

Load diagram, cable tray, type MKS 85

- 1 Permitted cable tray/ladder load in kN/m without man load
- 2 Support width in m
- 3 Rail bend in mm at permitted kN/m
- 4 Load scheme during testing
- Load curve with cable tray/ladder width in mm
- Strut bend curve according to support width

Cable tray SKS



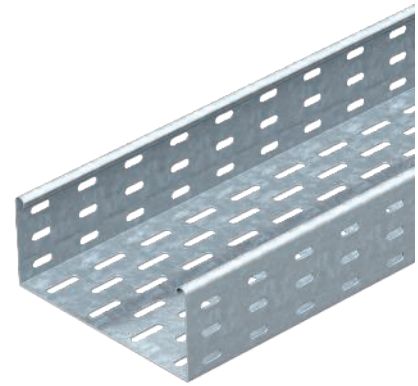
Type	Width mm	Plate thickness mm	Pack. m	Weight kg/100 m	Item No.
SKS 810 FS	100	1.50	3	310.340	6058108
SKS 820 FS	200	1.50	3	429.000	6058205
SKS 830 FS	300	1.50	3	527.000	6058302
SKS 840 FS	400	1.50	3	624.000	6058396
SKS 850 FS	500	1.50	3	704.700	6058507
SKS 860 FS	600	1.50	3	821.000	6058604
SKS 810 FT	100	1.50	3	334.000	6058620
SKS 820 FT	200	1.50	3	438.340	6058647
SKS 830 FT	300	1.50	3	543.000	6058663
SKS 840 FT	400	1.50	3	644.000	6058698
SKS 850 FT	500	1.50	3	750.340	6058728
SKS 860 FT	600	1.50	3	856.670	6058744

FS Strip-galvanised FT Hot-dip galvanised

/m

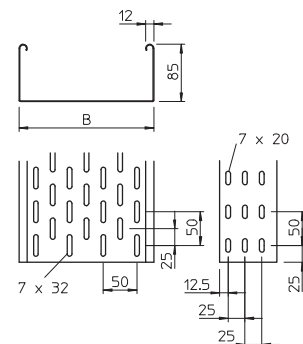
FS version includes connector, type RLVL 85.

SKS 85 = heavy-duty cable tray system with 85 mm side height.



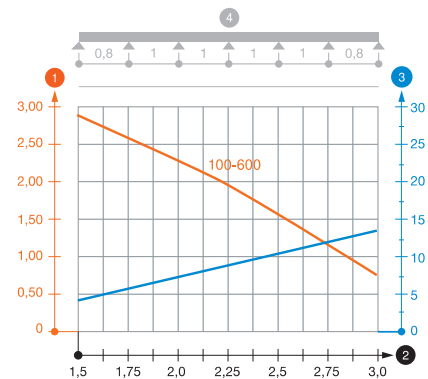
Type	Length mm	Dimen- sion B mm	Useful cross- section cm ²
SKS 810 FS	3000	100	83
SKS 820 FS	3000	200	186
SKS 830 FS	3000	300	253
SKS 840 FS	3000	400	338
SKS 850 FS	3000	500	423
SKS 860 FS	3000	600	508

Dimensions



Type	1.5 m kN/m	2.0 m kN/m	2.5 m kN/m	3.0 m kN/m
SKS 810 FS	2.8	2.25	1.5	0.75
SKS 820 FS	2.8	2.25	1.5	0.75
SKS 830 FS	2.8	2.25	1.5	0.75
SKS 840 FS	2.8	2.25	1.5	0.75
SKS 850 FS	2.8	2.25	1.5	0.75
SKS 860 FS	2.8	2.25	1.5	0.75

Load



Load diagram, cable tray, type SKS 85

- 1 Permitted cable tray/ladder load in kN/m without man load
- 2 Support width in m
- 3 Rail bend in mm at permitted kN/m
- 4 Load scheme during testing
- Load curve with cable tray/ladder width in mm
- Strut bend curve according to support width

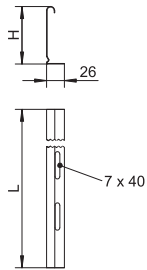
Barrier strip



Type	Dimension H mm	Plate thickness mm	Dimension L mm	Pack. m	Weight kg/100 m	Item No.
TSG 85 FS	85	0.75	3000	3	70.300	6062114
TSG 85 DD	85	0.75	3000	3	70.300	6062331

FS Strip-galvanised **DD** Strip galvanised zinc/aluminium, Double Dip

Barrier strip for separation of cables of different voltages or functions.



Barrier strip connector

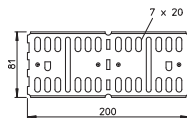
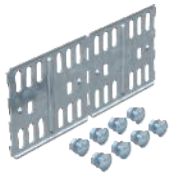


Type	Pack. pcs	Weight kg/100 pcs.	Item No.
TSGV VA4310	10	0.923	6067970

V2A Stainless steel, grade 301

Barrier strip connector for screwless connection of the TSG barrier strip in all side heights.

Straight and angle connector

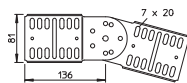
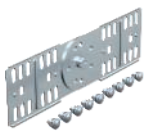


Type	Side height mm	Pack. pcs	Weight kg/100 pcs.	Item No.
RLVL 85 FS	85	10	27.300	6067123
RLVL 85 FT	85	10	28.300	6067816

FS Strip-galvanised **FT** Hot-dip galvanised

Including appropriate fastening material.

Adjustable connector

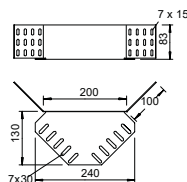


Type	Side height mm	Pack. pcs	Weight kg/100 pcs.	Item No.
RGV 85 FS	85	10	34.000	7082029
RGV 85 FT	85	10	34.000	7082320

FS Strip-galvanised **FT** Hot-dip galvanised

Including appropriate fastening material.

Corner connector



Type	Side height mm	Pack. pcs	Weight kg/100 pcs.	Item No.
REV 85 FS	85	10	61.000	6067980
REV 85 DD	85	10	61.000	6069320

FS Strip-galvanised **DD** Strip galvanised zinc/aluminium, Double Dip

Fastening materials should be ordered separately.

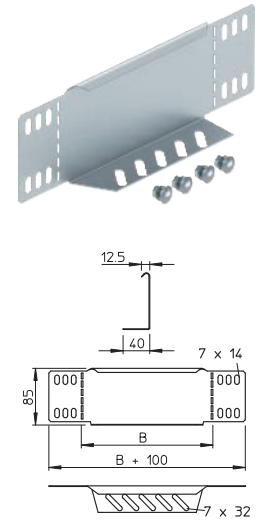
Reducer/stop-end

Type	Side height mm	Dimension B mm	Pack. pcs	Weight kg/100 pcs.	Item No.
RWEB 810 FS	85	100	1	12.500	7110103
RWEB 820 FS	85	200	1	23.400	7110200
RWEB 830 FS	85	300	1	33.300	7110308
RWEB 840 FS	85	400	1	43.200	7110405
RWEB 850 FS	85	500	1	53.200	7110502
RWEB 860 FS	85	600	1	63.000	7110618
RWEB 810 DD	85	100	1	12.600	7107315
RWEB 820 DD	85	200	1	23.300	7107331
RWEB 830 DD	85	300	1	33.300	7107366
RWEB 840 DD	85	400	1	43.200	7107382
RWEB 850 DD	85	500	1	53.100	7107404
RWEB 860 DD	85	600	1	63.100	7107420

FS Strip-galvanised DD Strip galvanised zinc/aluminium, Double Dip

/pc.

From a width of 150 mm, a perforated lower flange is available. Including appropriate fastening material.



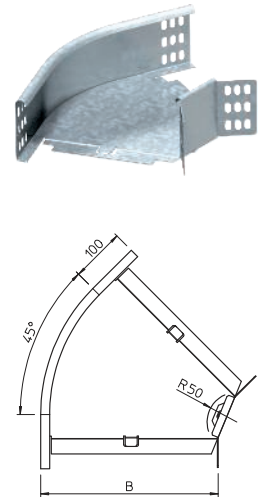
45° bend

Type	Dimension B mm	Pack. pcs	Weight kg/100 pcs.	Item No.
RB 45 810 FS	100	1	60.000	7000472
RB 45 820 FS	200	1	85.000	7000499
RB 45 830 FS	300	1	120.000	7000510
RB 45 810 FT	100	1	65.000	7067119
RB 45 820 FT	200	1	90.000	7067216
RB 45 830 FT	300	1	130.000	7067313

FS Strip-galvanised FT Hot-dip galvanised

/pc.

The fitting is shipped in an unmounted state. The WKV 85 angle connector is designed for 90° bends and can be adjusted to 45° on-site. Including appropriate fastening material.



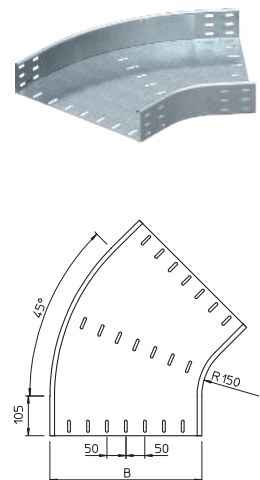
45° bend

Type	Dimension B mm	Pack. pcs	Weight kg/100 pcs.	Item No.
RB 45 840 FS	400	1	320.000	7000529
RB 45 850 FS	500	1	380.000	7000545
RB 45 860 FS	600	1	490.000	7000561
RB 45 840 FT	400	1	340.000	7067402
RB 45 850 FT	500	1	400.000	7067496
RB 45 860 FT	600	1	525.000	7067607

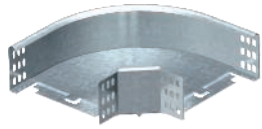
FS Strip-galvanised FT Hot-dip galvanised

/pc.

Fastening materials should be ordered separately.



90° bend

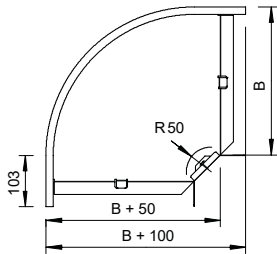


Type	Dimension B mm	Pack. pcs	Weight kg/100 pcs.	Item No.
RB 90 810 FS	100	1	65.000	7001762
RB 90 820 FS	200	1	150.000	7001789
RB 90 830 FS	300	1	180.000	7001800
RB 90 810 FT	100	1	70.000	7126127
RB 90 820 FT	200	1	160.000	7126216
RB 90 830 FT	300	1	200.000	7126301

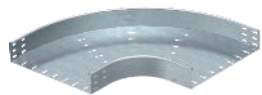
FS Strip-galvanised **FT** Hot-dip galvanised

/pc.

The fitting is shipped in an unmounted state. Including appropriate fastening material.



90° bend

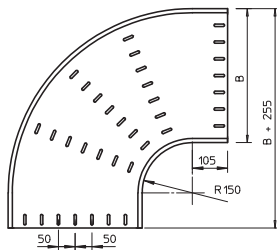


Type	Dimension B mm	Pack. pcs	Weight kg/100 pcs.	Item No.
RB 90 840 FS	400	1	500.000	7001819
RB 90 850 FS	500	1	650.000	7001835
RB 90 860 FS	600	1	820.000	7001851
RB 90 840 FT	400	1	540.000	7126417
RB 90 850 FT	500	1	690.000	7126514
RB 90 860 FT	600	1	870.000	7126611

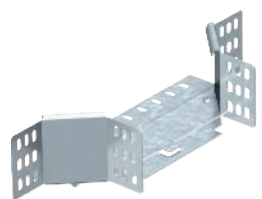
FS Strip-galvanised **FT** Hot-dip galvanised

/pc.

Fastening materials should be ordered separately.



Add-on tee



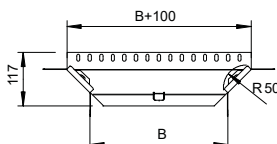
Type	Width mm	Pack. pcs	Weight kg/100 pcs.	Item No.
RAA 810 FS	100	1	40.000	7002475
RAA 820 FS	200	1	45.000	7002491
RAA 830 FS	300	1	60.000	7002513
RAA 810 FT	100	1	45.000	7122109
RAA 820 FT	200	1	50.000	7122213
RAA 830 FT	300	1	65.000	7122310

FS Strip-galvanised **FT** Hot-dip galvanised

/pc.

The fitting is shipped in an unmounted state. Including appropriate fastening material.

Add-on tee for horizontal and vertical use.



Add-on tee

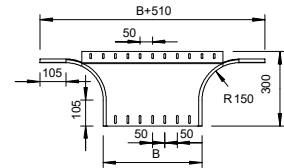
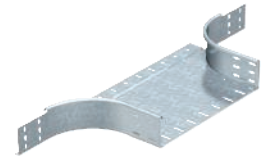
Type	Width mm	Pack. pcs	Weight kg/100 pcs.	Item No.
RAA 840 FS	400	1	230.000	7002521
RAA 850 FS	500	1	265.000	7002556
RAA 860 FS	600	1	295.000	7002572
RAA 840 FT	400	1	250.000	7122403
RAA 850 FT	500	1	290.000	7122500
RAA 860 FT	600	1	320.000	7122608

FS Strip-galvanised FT Hot-dip galvanised

/pc.

Fitting in a round design. The interior radius of the fitting is 150 mm. Fastening materials should be ordered separately.

Add-on tee for horizontal and vertical use.



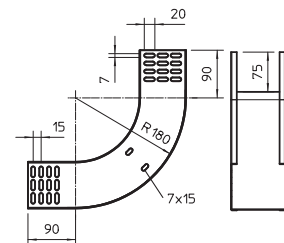
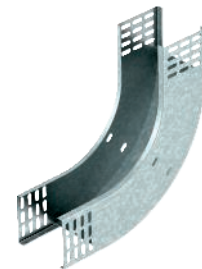
90° vertical bend, rising

Type	Side height mm	Dimen- sion B mm	Pack. pcs	Weight kg/100 pcs.	Item No.
RBV 810 S FS	85	100	1	97.100	7007230
RBV 820 S FS	85	200	1	132.600	7007234
RBV 830 S FS	85	300	1	156.200	7007238
RBV 840 S FS	85	400	1	179.900	7007242
RBV 850 S FS	85	500	1	203.500	7007246
RBV 860 S FS	85	600	1	227.100	7007250
RBV 810 S FT	85	100	1	97.100	7007231
RBV 820 S FT	85	200	1	132.600	7007235
RBV 830 S FT	85	300	1	156.200	7007239
RBV 840 S FT	85	400	1	179.900	7007243
RBV 850 S FT	85	500	1	203.500	7007247
RBV 860 S FT	85	600	1	227.100	7007251

FS Strip-galvanised FT Hot-dip galvanised

/pc.

The vertical bend is pushed over the end of the cable tray and screwed tight. Fastening materials should be ordered separately.



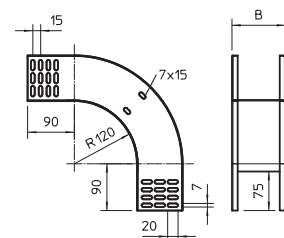
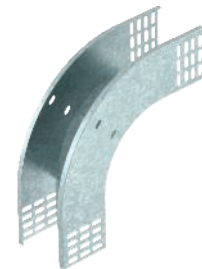
90° vertical bend, falling

Type	Side height mm	Dimen- sion B mm	Pack. pcs	Weight kg/100 pcs.	Item No.
RBV 810 F FS	85	100	1	86.600	7007270
RBV 820 F FS	85	200	1	104.200	7007274
RBV 830 F FS	85	300	1	121.800	7007278
RBV 840 F FS	85	400	1	139.500	7007282
RBV 850 F FS	85	500	1	157.100	7007286
RBV 860 F FS	85	600	1	174.700	7007290
RBV 810 F FT	85	100	1	86.600	7007271
RBV 820 F FT	85	200	1	104.200	7007275
RBV 830 F FT	85	300	1	121.800	7007279
RBV 840 F FT	85	400	1	139.500	7007283
RBV 850 F FT	85	500	1	157.100	7007287
RBV 860 F FT	85	600	1	174.700	7007291

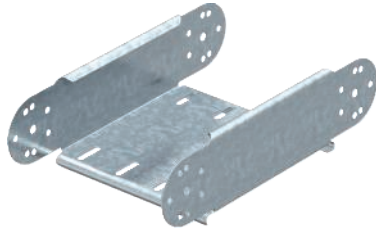
FS Strip-galvanised FT Hot-dip galvanised

/pc.

The vertical bend is pushed over the end of the cable tray and screwed tight. Fastening materials should be ordered separately.



Adjustable vertical bend element



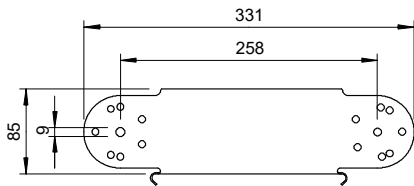
Type	Side height mm	Pack. pcs	Weight kg/100 pcs.	Item No.
RGBEV 810 FS	85	1	71.500	7005466
RGBEV 820 FS	85	1	91.900	7005482
RGBEV 830 FS	85	1	112.400	7005504
RGBEV 840 FS	85	1	133.000	7005520
RGBEV 850 FS	85	1	153.100	7005547
RGBEV 860 FS	85	1	173.400	7005563
RGBEV 810 FT	85	1	76.700	7076096
RGBEV 820 FT	85	1	98.500	7076207
RGBEV 830 FT	85	1	120.500	7076304
RGBEV 840 FT	85	1	142.000	7076401
RGBEV 850 FT	85	1	164.100	7076509
RGBEV 860 FT	85	1	185.900	7076606

FS Strip-galvanised FT Hot-dip galvanised

/pc.

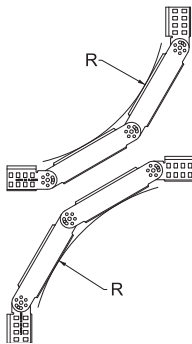
RGV 85 adjustable connectors should be ordered separately and in the appropriate quantity.

Dimensions



Type	Width mm	Plate thickness mm
RGBEV 810 FS	100	1.00
RGBEV 820 FS	200	1.00
RGBEV 830 FS	300	1.00
RGBEV 840 FS	400	1.00
RGBEV 850 FS	500	1.00
RGBEV 860 FS	600	1.00

Installation



Radius table

Quantity of elements	Radius
1	approx. 300 mm
2	approx. 450 mm
3	approx. 600 mm
4	approx. 750 mm
5	approx. 900 mm

Please order two RGV 85 adjustable connectors separately.

Cable tray MKS



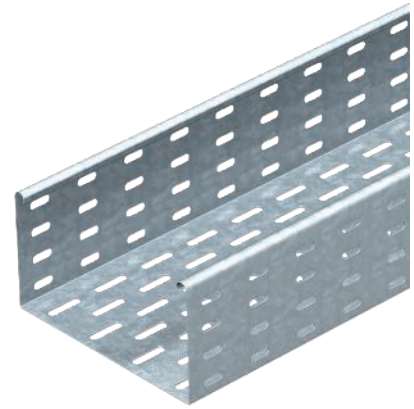
Type	Width mm	Plate thickness mm	Pack. m	Weight kg/100 m	Item No.
MKS 110 FS	100	1.00	3	243.100	6060102
MKS 120 FS	200	1.00	3	308.500	6060196
MKS 130 FS	300	1.00	3	373.900	6060307
MKS 140 FS	400	1.00	3	463.000	6060404
MKS 150 FS	500	1.00	3	503.700	6060412
MKS 155 FS	550	1.00	3	536.700	6060528
MKS 110 FT	100	1.00	3	250.000	6060609
MKS 120 FT	200	1.00	3	335.000	6060625
MKS 130 FT	300	1.00	3	407.000	6060641
MKS 140 FT	400	1.00	3	484.000	6060676

FS Strip-galvanised FT Hot-dip galvanised

/m

Including connector, type RLVL 110.

MKS 110 = medium-duty cable tray system with a side height of 110 mm.



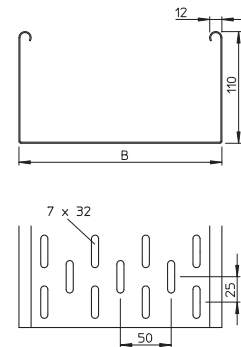
Type	Length mm	Dimen- sion B mm	Useful cross- section cm ²
MKS 110 FS	3000	100	108
MKS 120 FS	3000	200	218
MKS 130 FS	3000	300	328
MKS 140 FS	3000	400	438
MKS 150 FS	3000	500	548
MKS 155 FS	3000	550	603

Type	1.5 m kN/m	2.0 m kN/m	2.5 m kN/m	3.0 m kN/m
MKS 110 FS	1.85	1.3	0.75	0.6
MKS 120 FS	1.85	1.3	0.75	0.6
MKS 130 FS	1.85	1.3	0.75	0.6
MKS 140 FS	1.85	1.3	0.75	0.6
MKS 150 FS	1.85	1.3	0.75	0.6
MKS 155 FS	1.85	1.3	0.75	0.6

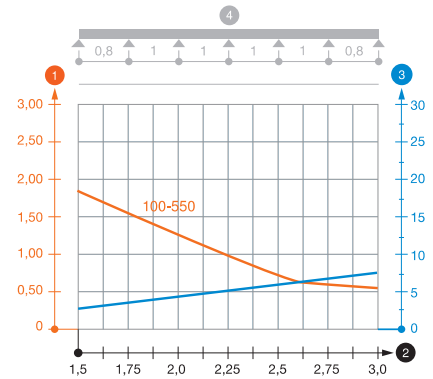
Load diagram, cable tray, type MKS 110

- 1 Permitted cable tray/ladder load in kN/m without man load
- 2 Support width in m
- 3 Rail bend in mm at permitted kN/m
- 4 Load scheme during testing
- Load curve with cable tray/ladder width in mm
- Strut bend curve according to support width

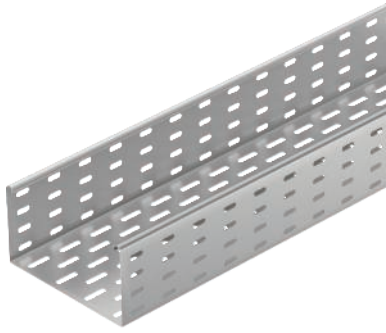
Dimensions



Load



Cable tray MKS



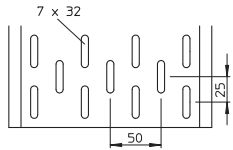
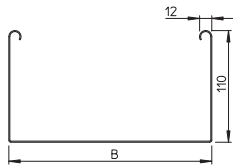
Type	Width mm	Plate thickness mm	Pack. m	Weight kg/100 m	Item No.
MKS 110 VA4301	100	1.00	3	243.000	6060803
MKS 120 VA4301	200	1.00	3	335.000	6060811
MKS 130 VA4301	300	1.00	3	407.000	6060838
MKS 140 VA4301	400	1.00	3	440.340	6060846

V2A Stainless steel, grade 304

/m

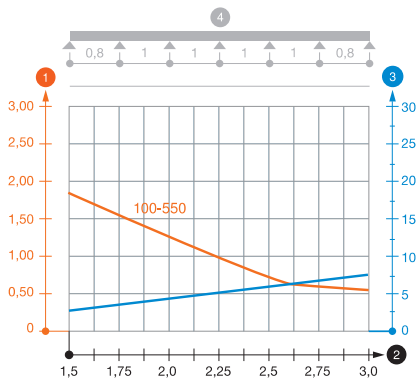
The cable tray is fastened to the bracket with screws, type FRS M6 x 12.
MKS 110 = medium-duty cable tray system with a side height of 110 mm.

Dimensions



Type	Length mm	Dimen- sion B mm	Useful cross- section cm ²
MKS 110 VA4301	3000	100	110
MKS 120 VA4301	3000	200	220
MKS 130 VA4301	3000	300	330
MKS 140 VA4301	3000	400	440

Load



Type	1.5 m kN/m	2.0 m kN/m	2.5 m kN/m	3.0 m kN/m
MKS 110 VA4301	1.85	1.3	0.75	0.6
MKS 120 VA4301	1.85	1.3	0.75	0.6
MKS 130 VA4301	1.85	1.3	0.75	0.6
MKS 140 VA4301	1.85	1.3	0.75	0.6

- 1 Permitted cable tray/ladder load in kN/m without man load
- 2 Support width in m
- 3 Rail bend in mm at permitted kN/m
- 4 Load scheme during testing
- Load curve with cable tray/ladder width in mm
- Strut bend curve according to support width

Cable tray SKS



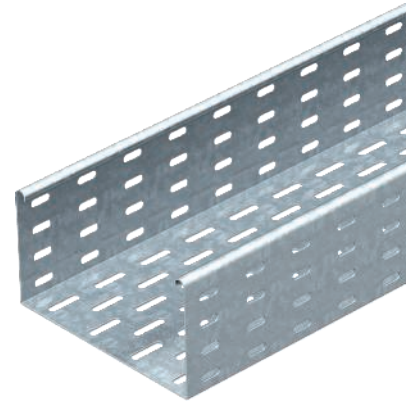
Type	Width mm	Plate thickness mm	Pack. m	Weight kg/100 m	Item No.
SKS 110 FS	100	1.50	3	386.000	6061109
SKS 120 FS	200	1.50	3	486.340	6061206
SKS 130 FS	300	1.50	3	584.000	6061303
SKS 140 FS	400	1.50	3	681.670	6061400
SKS 150 FS	500	1.50	3	779.670	6061508
SKS 155 FS	550	1.50	3	830.000	6061559
SKS 110 FT	100	1.50	3	388.680	6061605
SKS 120 FT	200	1.50	3	494.000	6061621
SKS 130 FT	300	1.50	3	598.340	6061656
SKS 140 FT	400	1.50	3	697.340	6061672
SKS 150 FT	500	1.50	3	807.000	6061702
SKS 155 FT	550	1.50	3	856.000	6061729

FS Strip-galvanised FT Hot-dip galvanised

/m

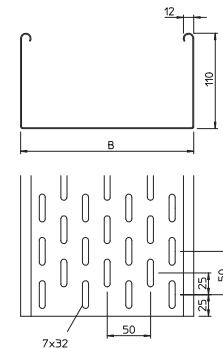
FS version includes connector, type RLVL 110.

SKS 110 = heavy-duty cable tray system with 110 mm side height.



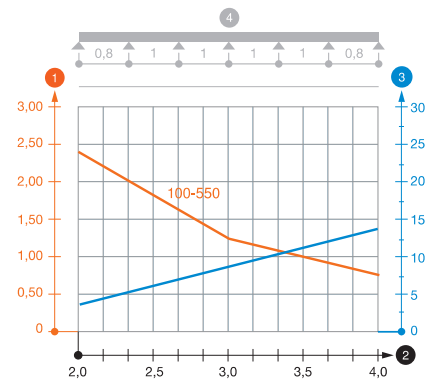
Type	Length mm	Dimen- sion B mm	Useful cross- section cm ²
SKS 110 FS	3000	100	108
SKS 120 FS	3000	200	218
SKS 130 FS	3000	300	328
SKS 140 FS	3000	400	438
SKS 150 FS	3000	500	548
SKS 155 FS	3000	550	603

Dimensions



Type	1.5 m kN/m	2.0 m kN/m	3.0 m kN/m	4.0 m kN/m
SKS 110 FS	3	2.4	1.2	0.8
SKS 120 FS	3	2.4	1.2	0.8
SKS 130 FS	3	2.4	1.2	0.8
SKS 140 FS	3	2.4	1.2	0.8
SKS 150 FS	3	2.4	1.2	0.8
SKS 155 FS	3	2.4	1.2	0.8

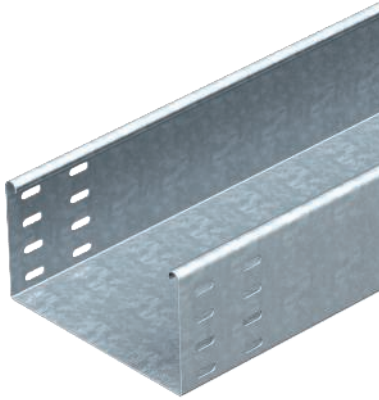
Load



Load diagram, cable tray, type SKS 110

- 1 Permitted cable tray/ladder load in kN/m without man load
- 2 Support width in m
- 3 Rail bend in mm at permitted kN/m
- 4 Load scheme during testing
- Load curve with cable tray/ladder width in mm
- Strut bend curve according to support width

Cable tray SKSU



Type	Plate		Pack. m	Weight kg/100 m	Item No.
	Width mm	thickness mm			
SKSU 110 FS	100	1.50	3	404.000	6063403
SKSU 120 FS	200	1.50	3	520.000	6063438
SKSU 130 FS	300	1.50	3	637.000	6063454
SKSU 140 FS	400	1.50	3	754.700	6063470
SKSU 150 FS	500	1.50	3	872.000	6063497
SKSU 155 FS	550	1.50	3	935.340	6063500
SKSU 110 FT	100	1.50	3	406.700	6064795
SKSU 120 FT	200	1.50	3	551.340	6064833
SKSU 130 FT	300	1.50	3	694.000	6064884
SKSU 140 FT	400	1.50	3	822.670	6064922
SKSU 150 FT	500	1.50	3	924.670	6064965
SKSU 155 FT	550	1.50	3	991.670	6064973

FS Strip-galvanised FT Hot-dip galvanised

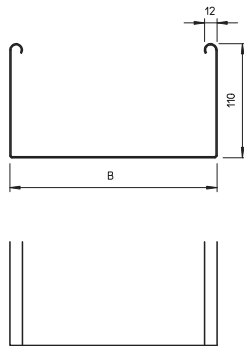
/m

The cable tray has connector perforations on both sides.

Straight connectors should be ordered separately and in the appropriate quantity.

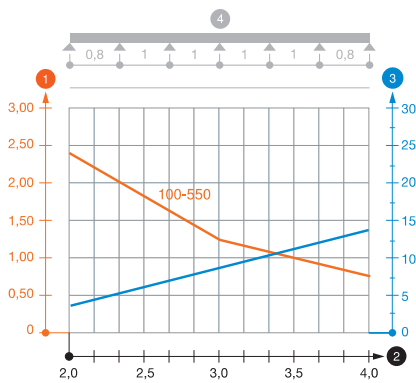
SKSU 110 = heavy-duty cable tray system, unperforated, with 110 mm side height.

Dimensions



Type	Length mm	Dimension B mm	Useful
			cross-section cm ²
SKSU 110 FS	3000	100	108
SKSU 120 FS	3000	200	218
SKSU 130 FS	3000	300	328
SKSU 140 FS	3000	400	438
SKSU 150 FS	3000	500	548
SKSU 155 FS	3000	550	603

Load



Type	1.5 m 2.0 m 3.0 m 4.0 m			
	kN/m	kN/m	kN/m	kN/m
SKSU 110 FS	3	2.4	1.2	0.8
SKSU 120 FS	3	2.4	1.2	0.8
SKSU 130 FS	3	2.4	1.2	0.8
SKSU 140 FS	3	2.4	1.2	0.8
SKSU 150 FS	3	2.4	1.2	0.8
SKSU 155 FS	3	2.4	1.2	0.8

Load diagram, cable tray, type SKSU 110

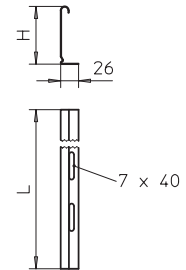
- 1 Permitted cable tray/ladder load in kN/m without man load
- 2 Support width in m
- 3 Rail bend in mm at permitted kN/m
- 4 Load scheme during testing
- Load curve with cable tray/ladder width in mm
- Strut bend curve according to support width

Barrier strip

Type	Dimension H mm	Plate thickness mm	Dimension L mm	Pack. m	Weight kg/100 m	Item No.
TSG 110 FS	110	0.75	3000	3	85.000	6062122
TSG 110 DD	110	0.75	3000	3	85.000	6062335
TSG 110 VA4301	110	0.75	3000	3	84.340	6062255

FS Strip-galvanised **DD** Strip galvanised zinc/aluminium, Double Dip

Barrier strip for separation of cables of different voltages or functions.

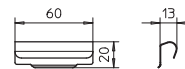


Barrier strip connector

Type	Pack. pcs	Weight kg/100 pcs	Item No.
TSGV VA4310	10	0.923	6067970

V2A Stainless steel, grade 301

Barrier strip connector for screwless connection of the TSG barrier strip in all side heights.

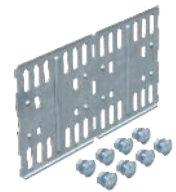
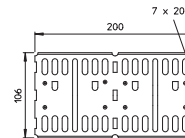


Straight and angle connector

Type	Side height mm	Pack. pcs	Weight kg/100 pcs	Item No.
RLVL 110 FS	110	10	33.800	6067131
RLVL 110 FT	110	10	35.100	6067913
RLVL 110 VA4301	110	10	33.400	6067948

FS Strip-galvanised **FT** Hot-dip galvanised

Including appropriate fastening material.

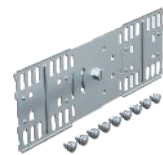
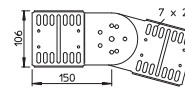


Adjustable connector

Type	Side height mm	Pack. pcs	Weight kg/100 pcs	Item No.
RGV 110 FS	110	10	61.700	7082037
RGV 110 FT	110	10	64.300	7082436
RGV 110 VA4301	110	4	61.700	7082479

FS Strip-galvanised **FT** Hot-dip galvanised

Including appropriate fastening material.

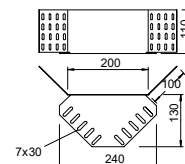


Corner connector

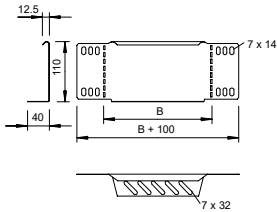
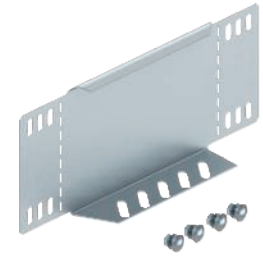
Type	Side height mm	Pack. pcs	Weight kg/100 pcs	Item No.
REV 110 FS	110	10	72.000	6067999
REV 110 DD	110	10	72.000	6069339
RGV 110 VA4301	110	4	61.700	7082479

FS Strip-galvanised **DD** Strip galvanised zinc/aluminium, Double Dip

Fastening materials should be ordered separately.



Reducer/stop-end



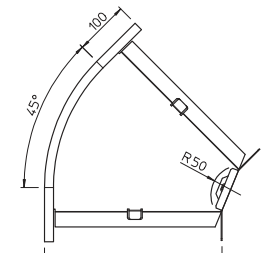
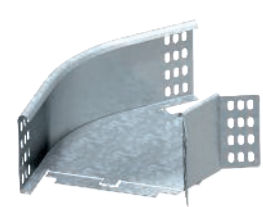
Type	Side height mm	Dimension B mm	Pack. pcs	Weight kg/100 pcs.	Item No.
RWEB 110 FS	110	100	1	16.400	7111096
RWEB 120 FS	110	200	1	29.000	7111207
RWEB 130 FS	110	300	1	40.700	7111304
RWEB 140 FS	110	400	1	52.900	7111428
RWEB 150 FS	110	500	1	64.800	7111509
RWEB 155 FS	110	550	1	70.700	7111541
RWEB 110 DD	110	100	1	16.300	7107455
RWEB 120 DD	110	200	1	25.000	7107471
RWEB 130 DD	110	300	1	44.000	7107501
RWEB 140 DD	110	400	1	58.000	7107536
RWEB 150 DD	110	500	1	64.700	7107552
RWEB 155 DD	110	550	1	70.700	7107560

FS Strip-galvanised **DD** Strip galvanised zinc/aluminium, Double Dip

/pc.

From a width of 150 mm, the perforated lower flange is provided. Including appropriate fastening material.

45° bend



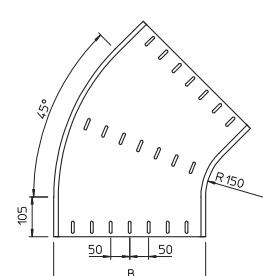
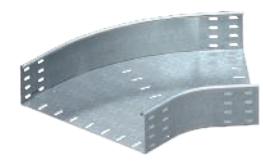
Type	Dimension B mm	Pack. pcs	Weight kg/100 pcs.	Item No.
RB 45 110 FS	100	1	70.000	7000634
RB 45 120 FS	200	1	100.000	7000650
RB 45 130 FS	300	1	135.000	7000677
RB 45 110 FT	100	1	75.000	7068115
RB 45 120 FT	200	1	110.000	7068212
RB 45 130 FT	300	1	145.000	7068328

FS Strip-galvanised **FT** Hot-dip galvanised

/pc.

The fitting is shipped in an unmounted state. The WKV 110 angle connector is designed for 90° bends and can be adjusted to 45° on-site. Including appropriate fastening material.

45° bend



Type	Dimension B mm	Pack. pcs	Weight kg/100 pcs.	Item No.
RB 45 140 FS	400	1	340.000	7000685
RB 45 150 FS	500	1	400.000	7000707
RB 45 155 FS	550	1	470.000	7000715
RB 45 140 FT	400	1	365.000	7068409
RB 45 150 FT	500	1	425.000	7068506
RB 45 155 FT	550	1	500.000	7068557

FS Strip-galvanised **FT** Hot-dip galvanised

/pc.

Fastening materials should be ordered separately.

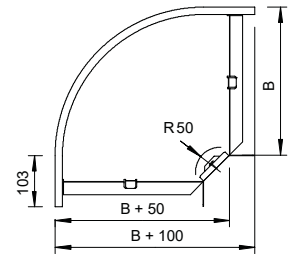
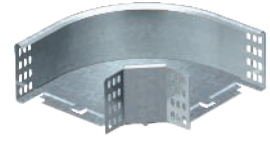
90° bend

Type	Dimension B mm	Pack. pcs	Weight kg/100 pcs.	Item No.
RB 90 110 FS	100	1	80.000	7001894
RB 90 120 FS	200	1	140.000	7001916
RB 90 130 FS	300	1	210.000	7001932
RB 90 110 FT	100	1	85.000	7127103
RB 90 120 FT	200	1	150.000	7127227
RB 90 130 FT	300	1	230.000	7127320

FS Strip-galvanised FT Hot-dip galvanised

/pc.

The fitting is shipped in an unmounted state.
Including appropriate fastening material.



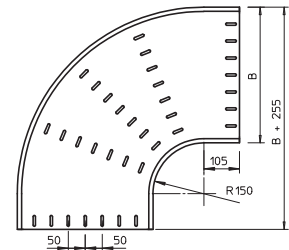
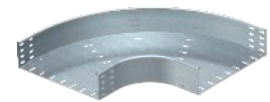
90° bend

Type	Dimension B mm	Pack. pcs	Weight kg/100 pcs.	Item No.
RB 90 140 FS	400	1	540.000	7001940
RB 90 150 FS	500	1	700.000	7001967
RB 90 155 FS	550	1	780.000	7001975
RB 90 140 FT	400	1	575.000	7127413
RB 90 150 FT	500	1	750.000	7127499
RB 90 155 FT	550	1	840.000	7127545

FS Strip-galvanised FT Hot-dip galvanised

/pc.

Fastening materials should be ordered separately.



Add-on tee

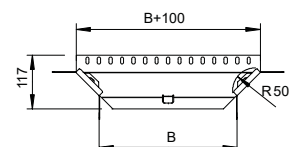
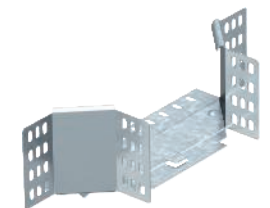
Type	Dimension B mm	Pack. pcs	Weight kg/100 pcs.	Item No.
RAA 110 FS	100	1	45.000	7002637
RAA 120 FS	200	1	55.000	7002653
RAA 130 FS	300	1	70.000	7002688
RAA 110 FT	100	1	50.000	7123116
RAA 120 FT	200	1	60.000	7123213
RAA 130 FT	300	1	75.000	7123310

FS Strip-galvanised FT Hot-dip galvanised

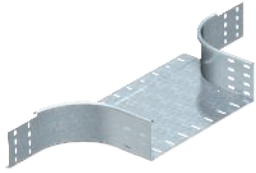
/pc.

The fitting is shipped in an unmounted state.
Including appropriate fastening material.

Add-on tee for horizontal and vertical use.



Add-on tee

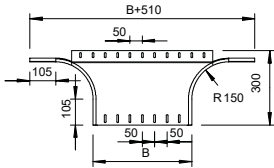


Type	Dimension B mm	Pack. pcs	Weight kg/100 pcs.	Item No.
RAA 140 FS	400	1	250.000	7002696
RAA 150 FS	500	1	285.000	7002726
RAA 155 FS	550	1	300.000	7002734
RAA 140 FT	400	1	270.000	7123396
RAA 150 FT	500	1	310.000	7123507
RAA 155 FT	550	1	325.000	7123558

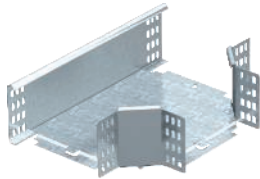
FS Strip-galvanised **FT** Hot-dip galvanised /pc.

Fastening materials should be ordered separately.

Add-on tee for horizontal and vertical use.



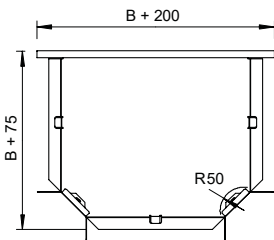
Tee



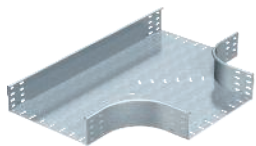
Type	Dimension B mm	Pack. pcs	Weight kg/100 pcs.	Item No.
RT 110 FS	100	1	105.000	7003633
RT 120 FS	200	1	160.000	7003668
RT 130 FS	300	1	235.000	7003684
RT 110 FT	100	1	110.000	7119119
RT 120 FT	200	1	180.000	7119216
RT 130 FT	300	1	250.000	7119313

FS Strip-galvanised **FT** Hot-dip galvanised /pc.

The fitting is shipped in an unmounted state. Including appropriate fastening material.



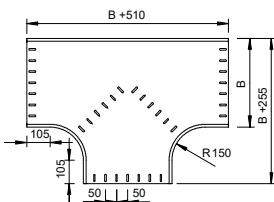
Tee



Type	Dimension B mm	Pack. pcs	Weight kg/100 pcs.	Item No.
RT 140 FS	400	1	770.000	7003692
RT 150 FS	500	1	950.000	7003714
RT 140 FT	400	1	825.000	7119402
RT 150 FT	500	1	950.000	7119496
RT 155 FT	550	1	1,100.000	7119550

FS Strip-galvanised **FT** Hot-dip galvanised /pc.

Fastening materials should be ordered separately.



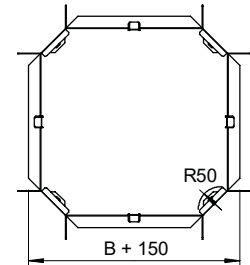
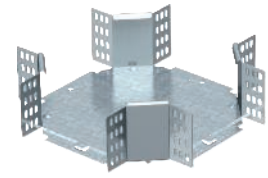
Cross-over

Type	Width mm	Pack. pcs	Weight kg/100 pcs.	Item No.
RK 110 FS	100	1	110.000	7004648
RK 120 FS	200	1	160.000	7004664
RK 130 FS	300	1	220.000	7004680
RK 110 FT	100	1	120.000	7115113
RK 120 FT	200	1	175.000	7115210
RK 130 FT	300	1	240.000	7115318

FS Strip-galvanised FT Hot-dip galvanised

/pc.

The fitting is shipped in an unmounted state. Including appropriate fastening material.



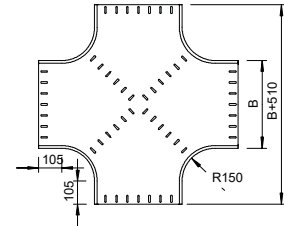
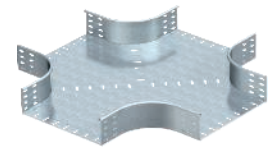
Cross-over

Type	Width mm	Pack. pcs	Weight kg/100 pcs.	Item No.
RK 140 FS	400	1	906.000	7004699
RK 150 FS	500	1	1,100.000	7004710
RK 140 FT	400	1	960.000	7115407
RK 150 FT	500	1	1,180.000	7115504

FS Strip-galvanised FT Hot-dip galvanised

/pc.

Fastening materials should be ordered separately.



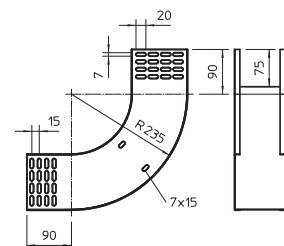
90° vertical bend, rising

Type	Side height mm	Dimen- sion B mm	Pack. pcs	Weight kg/100 pcs.	Item No.
RBV 110 S FS	110	100	1	120.100	7007310
RBV 120 S FS	110	200	1	151.300	7007314
RBV 130 S FS	110	300	1	182.400	7007318
RBV 140 S FS	110	400	1	213.600	7007322
RBV 150 S FS	110	500	1	244.800	7007326
RBV 155 S FS	110	550	1	260.400	7007330
RBV 110 S FT	110	100	1	120.000	7007398
RBV 120 S FT	110	200	1	163.000	7007400
RBV 130 S FT	110	300	1	182.400	7007319
RBV 140 S FT	110	400	1	231.000	7007404
RBV 150 S FT	110	500	1	244.800	7007327
RBV 155 S FT	110	550	1	260.400	7007331

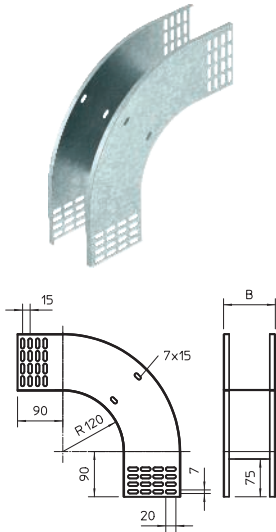
FS Strip-galvanised FT Hot-dip galvanised

/pc.

The vertical bend is pushed over the end of the cable tray and screwed tight. Fastening materials should be ordered separately.



90° vertical bend, falling



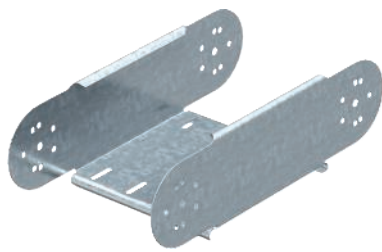
Type	Side height mm	Dimension B mm	Pack. pcs	Weight kg/100 pcs.	Item No.
RBV 110 F FS	110	100	1	106.300	7007350
RBV 120 F FS	110	200	1	124.000	7007354
RBV 130 F FS	110	300	1	141.600	7007358
RBV 140 F FS	110	400	1	159.200	7007362
RBV 150 F FS	110	500	1	176.900	7007366
RBV 155 F FS	110	550	1	185.700	7007370
RBV 110 F FT	110	100	1	120.000	7007468
RBV 120 F FT	110	200	1	134.000	7007470
RBV 130 F FT	110	300	1	141.600	7007359
RBV 140 F FT	110	400	1	172.000	7007474
RBV 150 F FT	110	500	1	176.900	7007367
RBV 155 F FT	110	550	1	185.700	7007371

FS Strip-galvanised FT Hot-dip galvanised

/pc.

The vertical bend is pushed over the end of the cable tray and screwed tight. Fastening materials should be ordered separately.

Adjustable vertical bend element



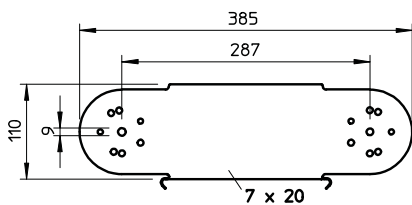
Type	Side height mm	Pack. pcs	Weight kg/100 pcs.	Item No.
RGBEV 110 FS	110	1	96.500	7005628
RGBEV 120 FS	110	1	116.800	7005644
RGBEV 130 FS	110	1	137.200	7005660
RGBEV 140 FS	110	1	157.500	7005687
RGBEV 150 FS	110	1	177.900	7005709
RGBEV 155 FS	110	1	204.900	7005717
RGBEV 110 FT	110	1	103.400	7077106
RGBEV 120 FT	110	1	125.200	7077203
RGBEV 130 FT	110	1	147.100	7077300
RGBEV 140 FT	110	1	168.900	7077408
RGBEV 150 FT	110	1	193.600	7077505

FS Strip-galvanised FT Hot-dip galvanised

/pc.

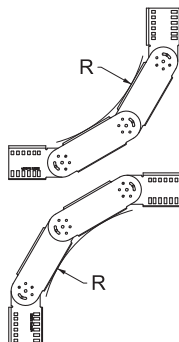
RGV 110 adjustable connectors should be ordered separately and in the appropriate quantity.

Dimensions



Type	Width mm	Plate thickness mm
RGBEV 110 FS	100	1.00
RGBEV 120 FS	200	1.00
RGBEV 130 FS	300	1.00
RGBEV 140 FS	400	1.00
RGBEV 150 FS	500	1.00
RGBEV 155 FS	550	1.00

Installation



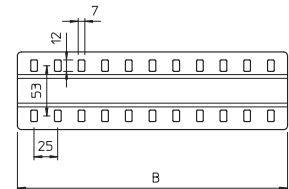
Radius table

Quantity of elements	Radius
1	approx. 300 mm
2	approx. 450 mm
3	approx. 600 mm
4	approx. 750 mm
5	approx. 900 mm

Please order two RGV 110 adjustable connectors separately.

Joint plate

Type	Dimension B mm	Pack. pcs	Weight		Item No.
			kg/100	pcs.	
SSLB 100 FS	100	20	7.700	7070205	
SSLB 150 FS	150	20	12.200	7070209	
SSLB 200 FS	200	20	16.700	7070213	
SSLB 300 FS	300	20	25.700	7070217	
SSLB 400 FS	400	20	34.700	7070221	
SSLB 500 FS	500	20	43.700	7070225	
SSLB 550 FS	550	20	48.200	7070229	
SSLB 600 FS	600	20	52.700	7070233	
SSLB 100 DD	100	20	7.700	7070306	
SSLB 150 DD	150	20	12.200	7070310	
SSLB 200 DD	200	20	16.700	7070314	
SSLB 300 DD	300	20	25.700	7070318	
SSLB 400 DD	400	20	34.700	7070322	
SSLB 500 DD	500	20	43.700	7070326	
SSLB 550 DD	550	20	48.200	7070330	
SSLB 600 DD	600	20	52.700	7070334	



FS Strip-galvanised DD Strip galvanised zinc/aluminium, Double Dip

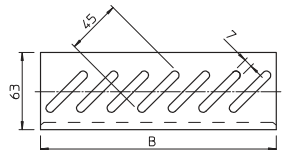
/pc.

Including appropriate fastening material.

Wide joint plate for use in all cable trays and wide span cable trays.

Bottom end plate

Type	Dimension B mm	Pack. pcs	Weight		Item No.
			kg/100	pcs.	
BEB 050 FS	50	100	2.500	7083041	
BEB 100 FS	100	100	5.400	7083106	
BEB 150 FS	150	100	8.400	7083157	
BEB 200 FS	200	100	11.400	7083203	
BEB 300 FS	300	100	17.200	7083300	
BEB 400 FS	400	100	23.100	7083408	
BEB 500 FS	500	50	29.000	7083505	
BEB 550 FS	550	50	32.000	7083556	
BEB 600 FS	600	50	35.000	7083602	
BEB 050 DD	50	100	2.500	7083616	
BEB 100 DD	100	100	5.400	7083618	
BEB 150 DD	150	100	8.400	7083622	
BEB 200 DD	200	100	11.400	7083626	
BEB 300 DD	300	100	17.200	7083630	
BEB 400 DD	400	100	23.100	7083634	
BEB 500 DD	500	50	29.000	7083638	
BEB 550 DD	550	50	32.000	7083640	
BEB 600 DD	600	50	35.000	7083642	



FS Strip-galvanised DD Strip galvanised zinc/aluminium, Double Dip

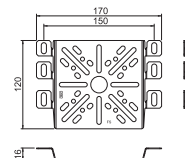
/pc.

For fastening, please order screws, type FRSB M6x12, separately.

Bottom end plate for floor reinforcement at the ends of the cable tray and as cable protection.

Wall bracket / Mounting plate

Type	Height mm	Width mm	Pack. pcs	Weight		Item No.
				kg/100	pcs.	
MP UNI FS	115	170	40	13.300	7084773	
MP UNI DD	115	170	40	11.000	7085114	
MP UNI VA4301	115	170	40	11.000	7085133	



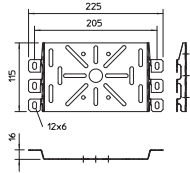
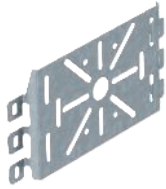
FS Strip-galvanised DD Strip galvanised zinc/aluminium, Double Dip

/pc.

Please order the truss-head bolt, type FRSB 6 x 12, separately.

Mounting plate, for fastening on the side rail of cable support systems.

Mounting plate

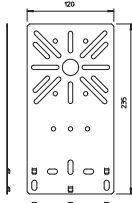


Type	Height		Width		Pack. pcs	Weight kg/100 pcs.	Item No.
	mm	mm	mm	mm			
MP 225 UNI FS	115	225			20	20.000	7084870
FS Strip-galvanised							/pc.

Please order the truss-head bolt, type FRSB 6 x 12, separately.

Mounting plate for universal use on side rails of cable trays and mesh cable trays.

Mounting plate

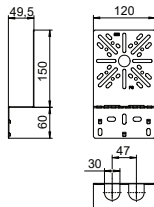


Type	Height		Width		Pack. pcs	Weight kg/100 pcs.	Item No.
	mm	mm	mm	mm			
MP FL FS	235	120			40	19.200	7084757
MP FL DD	235	120			40	19.200	7085108
FS Strip-galvanised DD Strip galvanised zinc/aluminium, Double Dip							/pc.

Please order the truss-head bolt, type FRS B6 x 12, separately.

Flat mounting plate, for fastening on the side rail of the cable tray.

Mounting plate

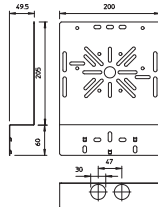


Type	Height		Width		Pack. pcs	Weight kg/100 pcs.	Item No.
	mm	mm	mm	mm			
MP WI KL. FS	210	120			20	20.200	7084765
MP WI KL. DD	210	120			20	20.200	7085111
FS Strip-galvanised DD Strip galvanised zinc/aluminium, Double Dip							/pc.

Please order the truss-head bolt, type FRS B6 x 12, separately.

Curved mounting plate, for fixing on the side rail of the cable tray.

Mounting plate

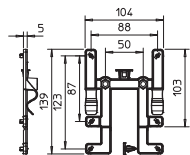


Type	Height		Width		Pack. pcs	Weight kg/100 pcs.	Item No.
	mm	mm	mm	mm			
MP WI GR. FS	240	200			25	39.400	7084781
MP WI GR. DD	240	200			25	39.400	7085112
FS Strip-galvanised DD Strip galvanised zinc/aluminium, Double Dip							/pc.

Please order the truss-head bolt, type FRS B6 x 12, separately.

Angled mounting plate, for fastening on the side rail of the cable tray.

Fastening element for cable tray

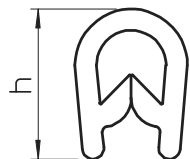


Type	Pack. pcs	Weight kg/100 pcs.	Item No.	
				BE TS KR
PC Polycarbonate				/100 pc.

The fastening element BE TS KR can be used to attach OBO junction boxes, type T60 and T100, to all standard cable trays in a few actions, quickly and without tools.

This keeps the junction box securely in position. However, it can be quickly dismantled as necessary. This is all done without using tools.

Edge protection strip



Type	For plate thickness mm	Dimension h mm	Pack. m	Weight kg/100 m	Item No.	
						KSB 2 PVC
KSB 4 PVC	1.5 - 4	15	10	14.000	6072895	
PVC Polyvinylchloride						price/100 m

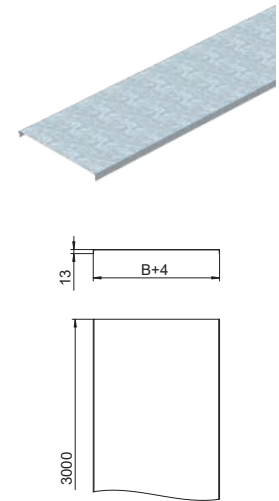
Edge protection strip with steel inlay to cover cut plate ends. Black, UV-resistant version.

Cover, unperforated

Type	Dimension B mm	Plate thickness mm	Length mm	Pack. m	Weight kg/100 m	Item No.
DRLU 050 FS	50	0.75	3000	3	59.770	6052056
DRLU 100 FS	100	0.75	3000	3	99.000	6052103
DRLU 150 FS	150	0.75	3000	3	138.270	6052153
DRLU 200 FS	200	1.00	3000	3	177.500	6052210
DRLU 300 FS	300	1.00	3000	3	256.000	6052307
DRLU 400 FS	400	1.00	3000	3	334.670	6052405
DRLU 500 FS	500	1.25	3000	3	619.230	6052512
DRLU 550 FS	550	1.25	3000	3	678.100	6052571
DRLU 600 FS	600	1.25	3000	3	737.000	6052609
DRLU 050 DD	50	0.75	3000	3	59.770	6052640
DRLU 100 DD	100	0.75	3000	3	99.000	6052643
DRLU 150 DD	150	0.75	3000	3	138.270	6052647
DRLU 200 DD	200	1.00	3000	3	177.500	6052650
DRLU 300 DD	300	1.00	3000	3	256.000	6052656
DRLU 400 DD	400	1.00	3000	3	334.500	6052662
DRLU 500 DD	500	1.25	3000	3	619.230	6052668
DRLU 550 DD	550	1.25	3000	3	678.100	6052671
DRLU 600 DD	600	1.25	3000	3	737.000	6052674
DRLU 050 VA4301	50	1.00	3000	3	59.770	6052821
DRLU 100 VA4301	100	1.00	3000	3	99.000	6052824
DRLU 150 VA4301	150	1.00	3000	3	138.240	6052828
DRLU 200 VA4301	200	1.00	3000	3	177.500	6052831
DRLU 300 VA4301	300	1.00	3000	3	256.000	6052834
DRLU 400 VA4301	400	1.00	3000	3	334.500	6052837
DRLU 500 VA4301	500	1.25	3000	3	619.170	6052841
DRLU 600 VA4301	600	1.25	3000	3	736.900	6052844
DRLU 050 VA4571	50	1.00	3000	3	59.670	6052978
DRLU 100 VA4571	100	1.00	3000	3	99.000	6052991
DRLU 150 VA4571	150	1.00	3000	3	138.240	6052992
DRLU 200 VA4571	200	1.00	3000	3	177.500	6052993
DRLU 300 VA4571	300	1.00	3000	3	256.000	6052994
DRLU 400 VA4571	400	1.00	3000	3	334.500	6052995
DRLU 500 VA4571	500	1.25	3000	3	619.170	6052996
DRLU 600 VA4571	600	1.25	3000	3	736.900	6052998

FS Strip-galvanised DD Strip galvanised zinc/aluminium, Double Dip

/m



Transverse bead from 500 mm width.

Cover for cable trays and mesh cable trays.

When using covers outdoors, additional measures against the influence of wind must be taken.

Cover clamp, universal

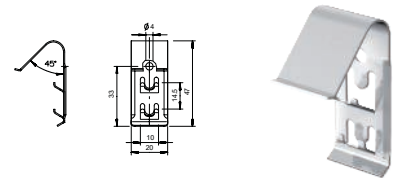
Type	Pack. pcs	Weight kg/100 pcs.	Item No.
DKU VA4310	20	0.800	6065600

V2A Stainless steel, grade 301 /100 pc.

Depending on the tray width, 4–6 cover clamps are required for secure fastening of a 3 m cover.

Cover clamp for universal fastening of covers on cable trays, mesh cable trays and AZ channels.

The cover clamp is not suitable for use with mesh cable trays with a side height of 35 mm.



Cover clamp

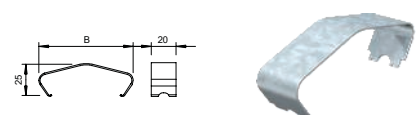
Type	Dimension B mm	Pack. pcs	Weight kg/100 pcs.	Item No.
DKL 35 VA4310	50.9	20	1.400	6065503
DKL 45 VA4310	60.9	20	1.600	6065511
DKL 60 VA4310	75.9	20	1.800	6065538
DKL 85 VA4310	95.9	20	2.100	6065546
DKL 110 VA4310	120.9	20	2.400	6065554

V2A Stainless steel, grade 301

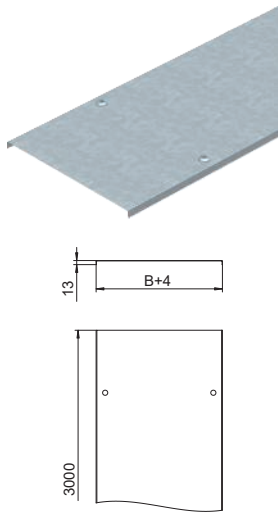
/pc.

Cover clamp for additional fastening of the cover, e.g. in case of high wind load.

Cover clamp for secure fastening of covers on cable trays and cable ladders.



Cover with turn buckle



Type	Dimension B mm	Plate thickness mm	Length mm	Pack. m	Weight kg/100 m	Item No.
DRL 050 FS	50	1.00	3000	3	61.070	6052053
DRL 075 FS	75	1.00	3000	3	83.340	6052029
DRL 100 FS	100	1.00	3000	3	103.000	6052096
DRL 150 FS	150	1.00	3000	3	142.000	6052150
DRL 200 FS	200	1.00	3000	3	181.340	6052207
DRL 300 FS	300	1.00	3000	3	259.330	6052304
DRL 400 FS	400	1.00	3000	3	338.670	6052401
DRL 500 FS	500	1.25	3000	3	623.000	6052509
DRL 550 FS	550	1.25	3000	3	681.670	6052568
DRL 600 FS	600	1.25	3000	3	741.000	6052606
DRL 050 DD	50	1.00	3000	3	61.070	6052700
DRL 100 DD	100	1.00	3000	3	106.340	6052703
DRL 150 DD	150	1.00	3000	3	145.670	6052706
DRL 200 DD	200	1.00	3000	3	183.340	6052709
DRL 300 DD	300	1.00	3000	3	263.340	6052712
DRL 400 DD	400	1.00	3000	3	342.070	6052715
DRL 500 DD	500	1.25	3000	3	626.670	6052718
DRL 550 DD	550	1.25	3000	3	685.340	6052721
DRL 600 DD	600	1.25	3000	3	744.570	6052724
DRL 050 FT	50	0.75	3000	3	66.970	6051332
DRL 100 FT	100	0.75	3000	3	106.670	6051340
DRL 150 FT	150	1.00	3000	3	159.340	6051359
DRL 200 FT	200	1.00	3000	3	202.670	6051367
DRL 300 FT	300	1.00	3000	3	289.000	6051383
DRL 400 FT	400	1.50	3000	3	542.000	6051413
DRL 500 FT	500	1.50	3000	3	667.670	6051448
DRL 600 FT	600	1.50	3000	3	793.000	6051472

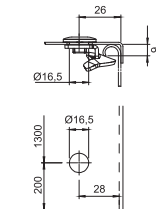
FS Strip-galvanised FT Hot-dip galvanised DD Strip galvanised zinc/aluminium, Double Dip /m

Transverse bead from 500 mm width.

Cover for cable trays and cable ladders with turn buckles.

When using covers outdoors, additional measures against the influence of wind must be taken.

Turn buckle



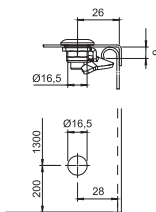
Type	Pack. pcs	Weight kg/100 pcs.	Item No.
DRL H FT	20	2.187	6065012

FT Hot-dip galvanised

Single-sided turn buckle. Use for cover widths of 100–600 mm.

Turn buckle for additional mounting or mounting at a later date.

Turn buckle



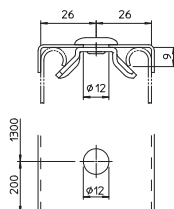
Type	Pack. pcs	Weight kg/100 pcs.	Item No.
DRL H A2	20	3.260	6065016

V2A Stainless steel, A2

Single-sided turn buckle. Use for cover widths of 100–600 mm.

Turn buckle for additional installation or installation at a later date.

Turn buckle



Type	Pack. pcs	Weight kg/100 pcs.	Item No.
DRL 311 2 FT	20	1.700	6065147

FT Hot-dip galvanised

Turn buckle on both sides. Use for cover width of 50 mm.

Turn buckle for additional installation or installation at a later date.

Cover for 45° bend

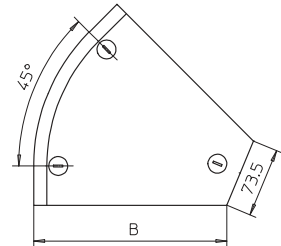
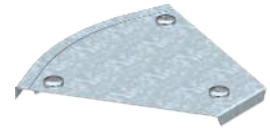
Type	Plate thickness mm	Pack. pcs	Weight kg/100 pcs.	Item No.
DFB 45 100 FS	1.00	1	16.600	7128819
DFB 45 150 FS	1.00	1	24.600	7128827
DFB 45 200 FS	1.00	1	34.600	7128835
DFB 45 300 FS	1.00	1	57.600	7128851
DFB 45 050 DD	1.00	1	23.000	7131801
DFB 45 100 DD	1.00	1	16.600	7131828
DFB 45 150 DD	1.00	1	24.600	7131836
DFB 45 200 DD	1.00	1	34.600	7131844
DFB 45 300 DD	1.00	1	57.600	7131860
DFB 45 100VA4301	1.00	1	14.000	7133901
DFB 45 200VA4301	1.00	1	35.000	7133928
DFB 45 300VA4301	1.00	1	55.000	7133936
DFB 45 100VA4571	1.00	1	14.000	7133984
DFB 45 200VA4571	1.00	1	35.000	7133986
DFB 45 300VA4571	1.00	1	55.000	7133988

FS Strip-galvanised DD Strip galvanised zinc/aluminium, Double Dip

/pc.

The cover can be used with fittings of all side heights.

Cover for 45° bend with pre-mounted turn buckle.



Cover for 45° bend

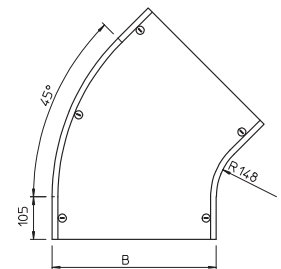
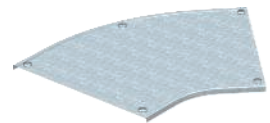
Type	Plate thickness mm	Pack. pcs	Weight kg/100 pcs.	Item No.
DFB 45 400 FS	1.25	1	197.600	7128886
DFB 45 500 FS	1.25	1	252.800	7128908
DFB 45 550 FS	1.25	1	282.700	7128916
DFB 45 600 FS	1.25	1	314.100	7128924
DFB 45 400 DD	1.25	1	197.600	7131879
DFB 45 500 DD	1.25	1	252.800	7131887
DFB 45 550 DD	1.25	1	282.700	7131895
DFB 45 600 DD	1.25	1	314.100	7131909
DFB 45 400VA4571	1.25	1	230.000	7133990
DFB 45 500VA4571	1.25	1	320.000	7133992
DFB 45 600VA4571	1.25	1	420.000	7133994

FS Strip-galvanised GB Stained DD Strip galvanised zinc/aluminium, Double Dip

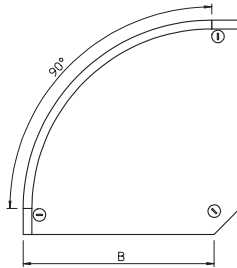
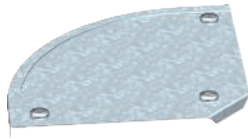
/pc.

The cover can be used with fittings of all side heights.

Cover for 45° bend with pre-mounted turn buckle.



Cover for 90° bend



Type	Width mm	Plate thickness mm	Pack. pcs	Weight kg/100 pcs.	Item No.
DFB 90 100 FS	100	1.00	1	21.400	7129610
DFB 90 150 FS	150	1.00	1	37.600	7129629
DFB 90 200 FS	200	1.00	1	54.200	7129637
DFB 90 300 FS	300	1.00	1	96.400	7129653
DFB 90 050 DD	50	1.00	1	47.300	7130503
DFB 90 100 DD	100	1.00	1	21.400	7130511
DFB 90 150 DD	150	1.00	1	37.600	7130538
DFB 90 200 DD	200	1.00	1	54.200	7130546
DFB 90 300 DD	300	1.00	1	96.400	7130562
DFB 90 100VA4301	100	1.00	1	65.000	7134908
DFB 90 200VA4301	200	1.00	1	55.000	7134916
DFB 90 300VA4301	300	1.00	1	95.000	7134924
DFB 90 100VA4571	100	1.00	1	65.000	7134982
DFB 90 200VA4571	200	1.00	1	55.000	7134988
DFB 90 300VA4571	300	1.00	1	95.000	7134990

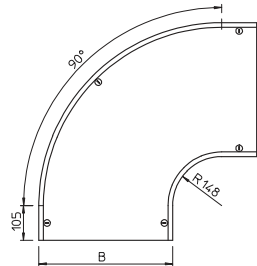
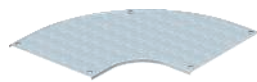
FS Strip-galvanised GB Stained DD Strip galvanised zinc/aluminium, Double Dip

/pc.

The cover can be used with fittings of all side heights.

Cover for 90° bend with pre-mounted turn buckles.

Cover for 90° bend



Type	Width mm	Plate thickness mm	Pack. pcs	Weight kg/100 pcs.	Item No.
DFB 90 400 FS	400	1.25	1	336.000	7129688
DFB 90 500 FS	500	1.25	1	451.000	7129718
DFB 90 550 FS	550	1.25	1	518.000	7129726
DFB 90 600 FS	600	1.25	1	585.000	7129734
DFB 90 400 DD	400	1.25	1	336.000	7130589
DFB 90 500 DD	500	1.25	1	451.000	7130600
DFB 90 550 DD	550	1.25	1	518.000	7130619
DFB 90 600 DD	600	1.25	1	585.000	7130627
DFB 90 400VA4301	400	1.25	1	275.000	7134932
DFB 90 500VA4301	500	1.25	1	470.000	7134940
DFB 90 600VA4301	600	1.25	1	588.000	7134967
DFB 90 400VA4571	400	1.25	1	335.000	7134992
DFB 90 500VA4571	500	1.25	1	450.000	7134994
DFB 90 600VA4571	600	1.25	1	580.000	7134996

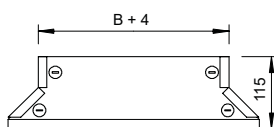
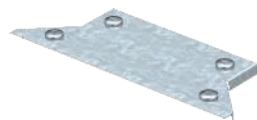
FS Strip-galvanised GB Stained DD Strip galvanised zinc/aluminium, Double Dip

/pc.

The cover can be used with fittings of all side heights.

Cover for 90° bend with pre-mounted turn buckles.

Cover for add-on tee



Type	Plate thickness mm	Pack. pcs	Weight kg/100 pcs.	Item No.
DFAA 100 FS	1.00	1	19.000	7128428
DFAA 150 FS	1.00	1	24.000	7128436
DFAA 200 FS	1.00	1	28.000	7128444
DFAA 300 FS	1.00	1	37.000	7128460
DFAA 050 DD	1.00	1	14.000	7131291
DFAA 100 DD	1.00	1	19.000	7131305
DFAA 150 DD	1.00	1	24.000	7131310
DFAA 200 DD	1.00	1	28.000	7131321
DFAA 300 DD	1.00	1	37.000	7131348
DFAA 100 VA4301	1.00	1	52.000	7136900
DFAA 200 VA4301	1.00	1	72.000	7136919
DFAA 300 VA4301	1.00	1	92.000	7136927

FS Strip-galvanised DD Strip galvanised zinc/aluminium, Double Dip

/pc.

The cover can be used with fittings of all side heights.

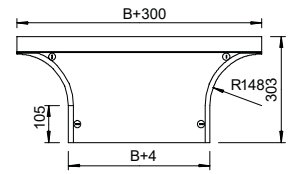
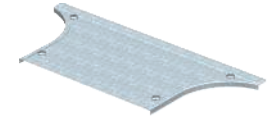
Cover for add-on tee with pre-mounted turn buckles.

Cover for add-on tee

Type	Width mm	Plate thickness mm	Pack. pcs	Weight kg/100 pcs.	Item No.
DFAA 400 FS	400	1.25	1	150.000	7128487
DFAA 500 FS	500	1.25	1	170.000	7128509
DFAA 550 FS	550	1.25	1	185.000	7128517
DFAA 600 FS	600	1.25	1	200.000	7128525
DFAA 400 DD	400	1.25	1	152.000	7131356
DFAA 500 DD	500	1.25	1	172.000	7131364
DFAA 550 DD	550	1.25	1	187.000	7131372
DFAA 600 DD	600	1.25	1	202.000	7131380
DFAA 400 VA4301	400	1.25	1	111.500	7136935
DFAA 500 VA4301	500	1.25	1	159.000	7136943
DFAA 600 VA4301	600	1.25	1	183.500	7136978
DFAA 400 VA4571	400	1.25	1	152.000	7136937
DFAA 500 VA4571	500	1.25	1	172.000	7136944
DFAA 600 VA4571	600	1.25	1	202.000	7136980

FS Strip-galvanised GB Stained DD Strip galvanised zinc/aluminium, Double Dip

/pc.



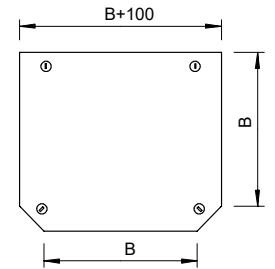
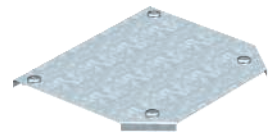
The cover can be used with fittings of all side heights.
Cover for add-on tee with pre-mounted turn buckles.

Cover for Tee

Type	Plate thickness mm	Pack. pcs	Weight kg/100 pcs.	Item No.
DFT 100 FS	1.00	1	30.400	7128215
DFT 150 FS	1.00	1	40.000	7128223
DFT 200 FS	1.00	1	60.000	7128231
DFT 300 FS	1.00	1	115.000	7128266
DFT 050 DD	1.00	1	15.000	7129300
DFT 100 DD	1.00	1	27.000	7129319
DFT 150 DD	1.00	1	45.000	7129327
DFT 200 DD	1.00	1	65.000	7129335
DFT 300 DD	1.00	1	125.000	7129351

FS Strip-galvanised DD Strip galvanised zinc/aluminium, Double Dip

/pc.



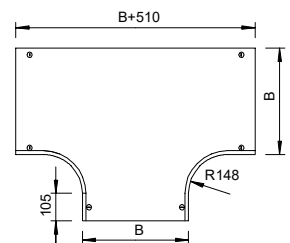
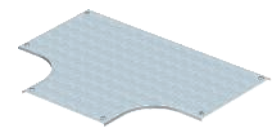
The cover can be used with fittings of all side heights.
Cover for tee with pre-mounted turn buckle.

Cover for Tee

Type	Plate thickness mm	Pack. pcs	Weight kg/100 pcs.	Item No.
DFT 400 FS	1.25	1	505.000	7128282
DFT 500 FS	1.25	1	670.000	7128304
DFT 600 FS	1.25	1	854.000	7128320
DFT 400 DD	1.25	1	600.000	7129386
DFT 500 DD	1.25	1	798.000	7129408
DFT 550 DD	1.25	1	905.500	7129416
DFT 600 DD	1.25	1	1,019.000	7129424

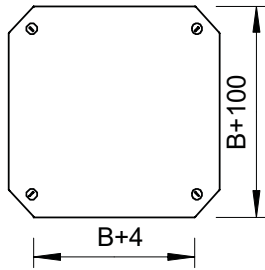
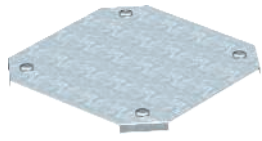
FS Strip-galvanised DD Strip galvanised zinc/aluminium, Double Dip

/pc.



The cover can be used with fittings of all side heights.
Cover for tee with pre-mounted turn buckle.

Cover for cross-over



Type	Plate		Pack. pcs	Weight kg/100 pcs.	Item No.
	Width mm	thickness mm			
DFK 100 FS	100	1.25	1	30.000	7128614
DFK 150 FS	150	1.25	1	45.000	7128622
DFK 200 FS	200	1.25	1	70.000	7128630
DFK 300 FS	300	1.25	1	125.000	7128657
DFK 100 DD	100	1.25	1	33.000	7131089
DFK 200 DD	200	1.25	1	77.000	7131100
DFK 300 DD	300	1.25	1	137.000	7131127

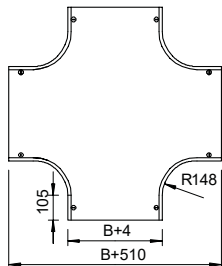
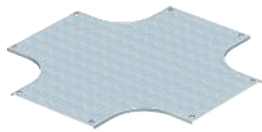
FS Strip-galvanised **DD** Strip galvanised zinc/aluminium, Double Dip

/pc.

The cover can be used with fittings of all side heights.

Cover for cross-over with pre-mounted turn buckles.

Cover for cross-over



Type	Plate		Pack. pcs	Weight kg/100 pcs.	Item No.
	Width mm	thickness mm			
DFK 400 FS	400	1.25	1	624.000	7128673
DFK 500 FS	500	1.25	1	810.000	7128703
DFK 600 FS	600	1.25	1	1,020.000	7128738
DFK 400 DD	400	1.25	1	739.000	7131143
DFK 500 DD	500	1.25	1	965.000	7131178
DFK 600 DD	600	1.25	1	1,215.000	7131194

FS Strip-galvanised **DD** Strip galvanised zinc/aluminium, Double Dip

/pc.

The cover can be used with fittings of all side heights.

Cover for cross-over with pre-mounted turn buckles.

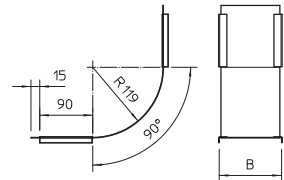
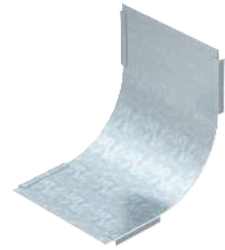
Cover for 90° vertical bend, rising

Type	Dimension B mm	Plate thickness mm	Pack. pcs	Weight kg/100 pcs.	Item No.
DBV 050 S FS	50	0.75	1	11.000	7130801
DBV 100 S FS	100	0.75	1	21.000	7130805
DBV 150 S FS	150	0.75	1	30.000	7130809
DBV 200 S FS	200	0.75	1	39.000	7130813
DBV 300 S FS	300	0.75	1	49.000	7130817
DBV 400 S FS	400	0.75	1	68.000	7130821
DBV 500 S FS	500	0.75	1	86.000	7130825
DBV 600 S FS	600	0.75	1	105.000	7130829
DBV 050 S DD	50	0.75	1	19.000	7131506
DBV 100 S DD	100	0.75	1	34.000	7131508
DBV 150 S DD	150	0.75	1	50.000	7131509
DBV 200 S DD	200	0.75	1	66.000	7131510
DBV 300 S DD	300	0.75	1	81.000	7131514
DBV 400 S DD	400	0.75	1	113.000	7131518
DBV 500 S DD	500	0.75	1	144.000	7131524
DBV 600 S DD	600	0.75	1	176.000	7131527
DBV 100 S VA4301	100	0.75	1	34.000	7130905
DBV 150 S VA4301	150	0.75	1	50.000	7130906
DBV 200 S VA4301	200	0.75	1	39.000	7130907
DBV 300 S VA4301	300	0.75	1	49.000	7130909
DBV 400 S VA4301	400	0.75	1	68.000	7130911
DBV 500 S VA4301	500	0.75	1	86.000	7130913
DBV 600 S VA4301	600	0.75	1	105.000	7130915
DBV 100 S VA4571	100	0.75	1	21.000	7130920
DBV 200 S VA4571	200	0.75	1	39.000	7130922
DBV 300 S VA4571	300	0.75	1	49.000	7130924
DBV 400 S VA4571	400	0.75	1	68.000	7130926
DBV 500 S VA4571	500	0.75	1	86.000	7130928
DBV 600 S VA4571	600	0.75	1	105.000	7130930

FS Strip-galvanised DD Strip galvanised zinc/aluminium, Double Dip /pc.

The fastening is guaranteed by the overlap of the cable tray covers. The cover can also be fastened using cover clamps.

Cover for all rising vertical bends.

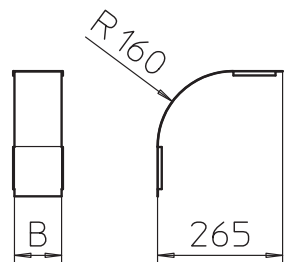
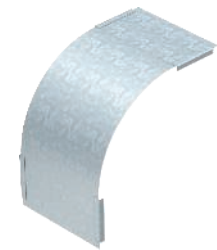


Cover for 90° vertical bend, falling, side height 35

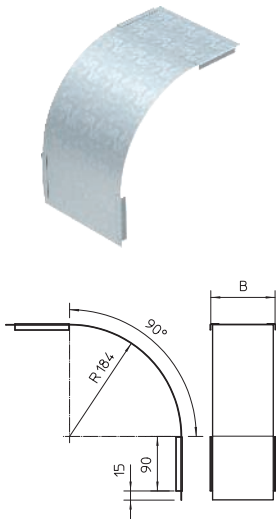
Type	Width mm	Plate thickness mm	Pack. pcs	Weight kg/100 pcs.	Item No.
DBV 35 050 F FS	50	0.75	1	13.000	7130760
DBV 35 100 F FS	100	0.75	1	23.000	7130764
DBV 35 150 F FS	150	0.75	1	37.000	7130768
DBV 35 200 F FS	200	0.75	1	45.000	7130772
DBV 35 300 F FS	300	0.75	1	67.000	7130776
DBV 35 050 F DD	50	0.75	1	10.000	7131590
DBV 35 100 F DD	100	0.75	1	23.000	7131592
DBV 35 150 F DD	150	0.75	1	37.000	7131594
DBV 35 200 F DD	200	0.75	1	45.000	7131596
DBV 35 300 F DD	300	0.75	1	67.000	7131600

FS Strip-galvanised DD Strip galvanised zinc/aluminium, Double Dip /pc.

The fastening is guaranteed by the overlap of the cable tray covers. The cover can also be fastened using cover clamps.



Cover for 90° vertical bend, falling, side height 60



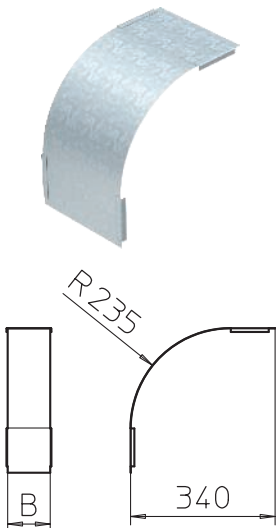
Type	Dimension B mm	Plate thickness mm	Pack. pcs	Weight kg/100 pcs.	Item No.
DBV 60 050 F FS	50	0.75	1	14.000	7130847
DBV 60 100 F FS	100	0.75	1	25.000	7130852
DBV 60 150 F FS	150	0.75	1	37.000	7130856
DBV 60 200 F FS	200	0.75	1	49.000	7130860
DBV 60 300 F FS	300	0.75	1	73.000	7130864
DBV 60 400 F FS	400	0.75	1	96.000	7130868
DBV 60 500 F FS	500	0.75	1	120.000	7130872
DBV 60 600 F FS	600	0.75	1	143.000	7130876
DBV 60 050 F DD	50	0.75	1	23.000	7131630
DBV 60 100 F DD	100	0.75	1	42.000	7131632
DBV 60 150 F DD	150	0.75	1	62.000	7131634
DBV 60 200 F DD	200	0.75	1	82.000	7131636
DBV 60 300 F DD	300	0.75	1	122.000	7131640
DBV 60 400 F DD	400	0.75	1	160.000	7131644
DBV 60 500 F DD	500	0.75	1	200.000	7131648
DBV 60 600 F DD	600	0.75	1	238.000	7131652
DBV60100F VA4301	100	0.75	1	25.000	7130952
DBV60150F VA4301	150	0.75	1	62.000	7130953
DBV60200F VA4301	200	0.75	1	49.000	7130954
DBV60300F VA4301	300	0.75	1	73.000	7130956
DBV60400F VA4301	400	0.75	1	96.000	7130958
DBV60500F VA4301	500	0.75	1	120.000	7130960
DBV60600F VA4301	600	0.75	1	143.000	7130962
DBV60100F VA4571	100	0.75	1	25.000	7130972
DBV60200F VA4571	200	0.75	1	49.000	7130974
DBV60300F VA4571	300	0.75	1	73.000	7130976
DBV60400F VA4571	400	0.75	1	96.000	7130978
DBV60500F VA4571	500	0.75	1	120.000	7130980
DBV60600F VA4571	600	0.75	1	143.000	7130982

FS Strip-galvanised DD Strip galvanised zinc/aluminium, Double Dip

/pc.

The fastening is guaranteed by the overlap of the cable tray covers. The cover can also be fastened using cover clamps.

Cover for 90° vertical bend, falling, side height 85



Type	Dimension B mm	Plate thickness mm	Pack. pcs	Weight kg/100 pcs.	Item No.
DBV 85 100 F FS	100	0.75	1	27.100	7130990
DBV 85 200 F FS	200	0.75	1	52.500	7130994
DBV 85 300 F FS	300	0.75	1	77.800	7130998
DBV 85 400 F FS	400	0.75	1	103.200	7131002
DBV 85 500 F FS	500	0.75	1	128.500	7131006
DBV 85 600 F FS	600	0.75	1	153.900	7131010
DBV 85 100 F DD	100	0.75	1	45.200	7131672
DBV 85 200 F DD	200	0.75	1	87.500	7131676
DBV 85 300 F DD	300	0.75	1	129.700	7131680
DBV 85 400 F DD	400	0.75	1	172.000	7131684
DBV 85 500 F DD	500	0.75	1	214.200	7131688
DBV 85 600 F DD	600	0.75	1	256.000	7131692

FS Strip-galvanised DD Strip galvanised zinc/aluminium, Double Dip

/pc.

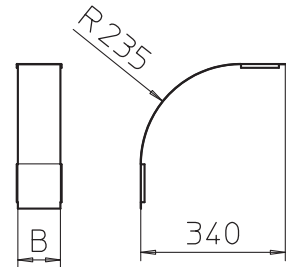
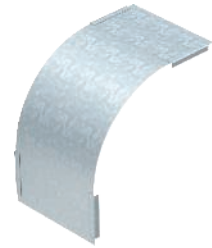
The fastening is guaranteed by the overlap of the cable tray covers. The cover can also be fastened using cover clamps.

Cover for 90° vertical bend, falling, side height 110

Type	Dimension B mm	Plate thickness mm	Pack. pcs	Weight kg/100 pcs.	Item No.
DBV 110 100 F FS	100	0.75	1	29.000	7131030
DBV 110 150 F FS	150	0.75	1	42.600	7131032
DBV 110 200 F FS	200	0.75	1	56.200	7131034
DBV 110 300 F FS	300	0.75	1	83.400	7131038
DBV 110 400 F FS	400	0.75	1	110.600	7131042
DBV 110 500 F FS	500	0.75	1	137.800	7131046
DBV 110 550 F FS	550	0.75	1	151.400	7131050
DBV 110 600 F FS	600	0.75	1	165.000	7131052
DBV 110 100 F DD	100	0.75	1	48.300	7131556
DBV 110 150 F DD	150	0.75	1	71.000	7131554
DBV 110 200 F DD	200	0.75	1	93.700	7131560
DBV 110 300 F DD	300	0.75	1	139.000	7131564
DBV 110 400 F DD	400	0.75	1	184.300	7131568
DBV 110 500 F DD	500	0.75	1	229.700	7131572
DBV 110 550 F DD	550	0.75	1	252.300	7131574
DBV 110 600 F DD	600	0.75	1	275.000	7131576

FS Strip-galvanised DD Strip galvanised zinc/aluminium, Double Dip

/pc.



The fastening is guaranteed by the overlap of the cable tray covers. The cover can also be fastened using cover clamps.

OBO Bettermann Holding GmbH & Co. KG
P.O. Box 1120
58694 Menden
GERMANY

Customer Service
Tel.: +49 23 73 89 - 17 00
Fax: +49 23 73 89 - 12 38
export@obo.de

www.obo-bettermann.com

Building Connections

